

STAINLESS STEEL
**PROCESS PIPING
COMPONENTS**



TABLE OF CONTENTS

Stainless Steel Hangers.....	3
Polypropylene Hex Hangers.....	4
High Temp Hex Hangers.....	6
Metal Detectable Hex Hangers.....	8
Rubber Grommet Hex Hangers.....	10
U-Bolt Hangers.....	12
Stainless Steel Components.....	15
Adjustable Band Clamps.....	16
Adjustable Legs.....	16
End Caps.....	17
Rings.....	18
Tube & Pipe Saddles.....	18
Wall Flanges.....	19
Wall Plates.....	21
Frequently Asked Questions.....	22
Recommended Hanger Spacing.....	24
ANSI Pipe Schedules.....	25
Facility Information.....	26

Stainless Steel Hangers

At AWI our stainless steel hex hangers have been an industry standard for over 40 years. We are proud that our hangers are trusted in some of the largest food facilities in the USA. We are equally proud that our hex hangers are 100% made in the USA at our facility in Winsted, MN.

Quality & Construction

- › USDA Approved
- › Sanitary and Corrosive Resistant
- › Uniform Tumbled Finish
- › 304 Stainless Steel
- › ISO 9001: 2015 Certified Manufacturing Facility
- › Made in the USA



Contractors and Wholesalers

We work with wholesalers and contractors all over the USA. Our competitive pricing structure and large in-stock inventory allows our wholesale partners to sell our products without the need to carry massive inventories.

- › Large In-Stock Inventory
- › Quick Turnaround on Stock Orders
- › Multiple Packaging Options

If you are interested in becoming a wholesale partner please email us at customerservice@awimfg.com for more information.

Why Trust AWI With Your Hex Hanger Needs?

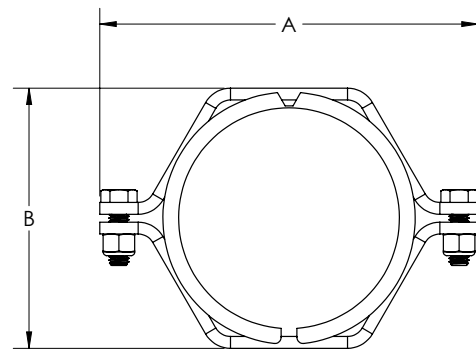
Our reputation as an industry leader matters to us! We strive every day to produce high-quality products at a competitive price. With over 40 years of experience in the food and dairy industry, we understand the importance of sanitary designs and considerations for food safety. It is evident in every product we make!

- › Outstanding Customer Service
- › Fast Quotes
- › Competitive Pricing

TUBE SIZE

Polypropylene Hex Hangers

Size (Tube)			Hanger w/ Polypropylene Collar	Bracket w/ Nuts & Bolts Only	Polypropylene Collar Only	Bolt Size
	A	B	Part #	Part #	Part #	Part #
1/2"	2 1/4"	1 1/16"	HS-050T-C	BS-050T-C	CP-050T	1/4" x 3/4"
3/4"	2 5/8"	1 3/16"	HS-075T-C	BS-075T-C	CP-075T	1/4" x 3/4"
1"	3 3/8"	1 9/16"	HS-100T-C	BS-100T-C	CP-100T	5/16" x 1"
1 1/2"	3 3/4"	2 1/8"	HS-150T-C	BS-150T-C	CP-150T	5/16" x 1"
2"	4 7/16"	2 5/8"	HS-200T-C	BS-200T-C	CP-200T	5/16" x 1"
2 1/2"	4 15/16"	3 1/8"	HS-250T-C	BS-250T-C	CP-250T	5/16" x 1"
3"	5 9/16"	3 5/8"	HS-300T-C	BS-300T-C	CP-300T	5/16" x 1"
4"	6 5/8"	4 5/8"	HS-400T-C	BS-400T-C	CP-400T	5/16" x 1"
5"	8 1/8"	5 5/8"	HS-500T-C	BS-500T-C	CP-500T	5/16" x 1"
6"	9 3/16"	6 5/8"	HS-600T-C	BS-600T-C	CP-600T	5/16" x 1"
8"	11 3/8"	8 3/4"	HS-800T-C	BK-800T-NH	CP-800T	5/16" x 1"
10"	14 1/2"	10 1/2"	HS-10.T-C	BK-10.T-NH	CP-10.T	3/8" x 1"
12"	16 5/8"	13"	HS-12.T-C	BK-12.T-NH	CP-12.T	3/8" x 1"



Typical Unfilled Polypropylene:

- › Deflection Temperature (@264 psi) 120°F
- › Deflection Temperature (@66 psi) 225°F
- › Melting Temperature Approximately 329°F



PIPE SIZE

Polypropylene Hex Hangers

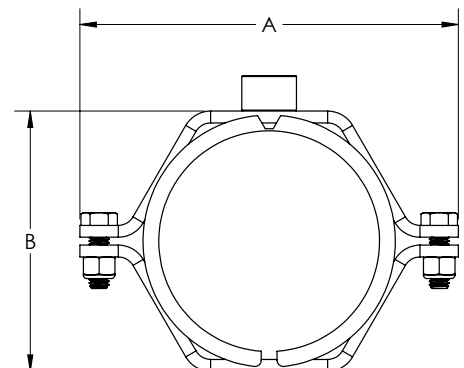
Size (Pipe)	A	B	Hanger w/ Polypropylene Collar	Bracket w/ Nuts & Bolts Only	Polypropylene Collar Only	Bolt Size
			Part #	Part #	Part #	Part #
1/2"	3 3/8"	1 5/8"	HS-050P-C	BS-100T-C	CP-050P	1/4" x 3/4"
3/4"	3 3/8"	1 5/8"	HS-075P-C	BS-100T-C	CP-075P	1/4" x 3/4"
1"	3 3/4"	2 1/8"	HS-100P-C	BS-150T-C	CP-100P	5/16" x 1"
1 1/4"	3 3/4"	2 1/4"	HS-125P-C	BS-150T-C	CP-125P	5/16" x 1"
1 1/2"	4 7/16"	2 5/8"	HS-150P-C	BS-200T-C	CP-150P	5/16" x 1"
2"	4 15/16"	3 1/8"	HS-200P-C	BS-250T-C	CP-200P	5/16" x 1"
2 1/2"	5 9/16"	3 1/8"	HS-250P-C	BS-300T-C	CP-250P	5/16" x 1"
3"	6 1/16"	4 1/4"	HS-300P-C	BS-300P-C	CP-300P	5/16" x 1"
4"	7 1/2"	5 5/8"	HS-400P-C	BS-400P-C	CP-400P	5/16" x 1"
5"	8 1/2"	6 3/8"	HS-500P-C	BS-500P-C	CP-500T	5/16" x 1"
6"	9 7/8"	7 3/8"	HS-600P-C	BS-600P-C	CP-600P	5/16" x 1"
8"	11 3/8"	9 3/8"	HS-800P-C	BK-800P-NH	CP-800T	5/16" x 1"
10"	15 3/8"	11 1/2"	HS-10.P-C	BK-10.P-NH	CP-10.T	3/8" x 1"
12"	17 1/2"	13 7/8"	HS-12.P-C	BK-12.P-NH	CP-12.T	3/8" x 1"



TUBE & PIPE SIZE

Coupling With Collar

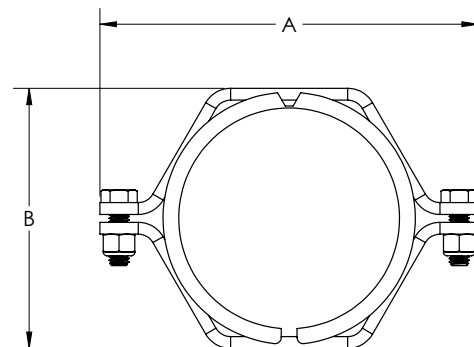
Size	Add to Part # Above	Half Coupling Only
	Part #	Part #
3/8" Pipe Coupling	-PC038	CPGPIPO-3/8
1/2" Pipe Coupling	-PC050	CPGPIPO-1/2
3/8" Rod Coupling	-RC038	CPGRODO-3/8
1/2" Rod Coupling	-RC050	CPGRODO-1/2



TUBE SIZE

High Temp Hex Hangers

			Hanger w/ High-Temp Collar	Bracket w/ Nuts & Bolts Only	High -Temp Collar Only	Bolt Size
Size (Tube)	A	B	Part #	Part #	Part #	Part #
1/2"	2 1/4"	1 1/16"	HS-050T-H	BS-050T-C	CH-050T	1/4" x 3/4"
3/4"	2 5/8"	1 3/16"	HS-075T-H	BS-075T-C	CH-075T	1/4" x 3/4"
1"	3 3/8"	1 9/16"	HS-100T-H	BS-100T-C	CH-100T	5/16" x 1"
1 1/2"	3 3/4"	2 1/8"	HS-150T-H	BS-150T-C	CH-150T	5/16" x 1"
2"	4 7/16"	2 5/8"	HS-250T-H	BS-200T-C	CH-200T	5/16" x 1"
2 1/2"	4 15/16"	3 1/8"	HS-250T-H	BS-250T-C	CH-250T	5/16" x 1"
3"	5 9/16"	3 5/8"	HS-300T-H	BS-300T-C	CH-300T	5/16" x 1"
4"	6 5/8"	4 5/8"	HS-400T-H	BS-400T-C	CH-400T	5/16" x 1"
5"	8 1/8"	5 5/8"	HS-500T-H	BS-500T-C	CH-500T	5/16" x 1"
6"	9 3/16"	6 5/8"	HS-600T-H	BS-600T-C	CH-600T	5/16" x 1"



Typical High Temp Collar:

- › Collars can withstand continuous temperature of 325°F.
- › Softening point = 374°F



PIPE SIZE

High Temp Hex Hangers

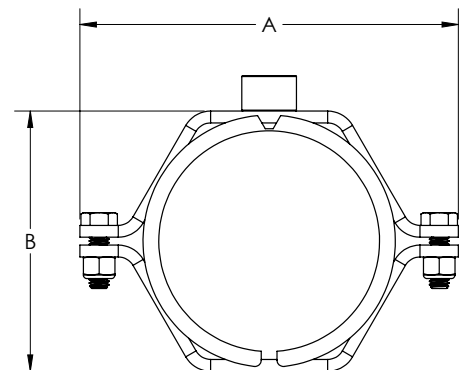
			Hanger w/ High-Temp Collar	Bracket w/ Nuts & Bolts Only	High -Temp Collar Only	Bolt Size
Size (Pipe)	A	B	Part #	Part #	Part #	Part #
1/2"	3 3/8"	1 5/8"	HS-050P-H	BS-100T-C	CH-050P	1/4" x 3/4"
3/4"	3 3/8"	1 5/8"	HS-075P-H	BS-100T-C	CH-075P	1/4" x 3/4"
1"	3 3/4"	1 7/8"	HS-100P-H	BS-150T-C	CH-100P	5/16" x 1"
1 1/2"	4 7/16"	2 5/8"	HS-150P-H	BS-200T-C	CH-150P	5/16" x 1"
2"	4 15/16"	3 1/8"	HS-200P-H	BS-250T-C	CH-200P	5/16" x 1"
2 1/2"	5 9/16"	3 7/8"	HS-250P-H	BS-300T-C	CH-250P	5/16" x 1"
3"	6 1/16"	4 1/4"	HS-300P-H	BS-300P-C	CH-300P	5/16" x 1"
4"	7 1/2"	5 5/8"	HS-400P-H	BS-400P-C	CH-400P	5/16" x 1"
6"	9 7/8"	7 3/8"	HS-600P-H	BS-600P-C	CH-600P	5/16" x 1"



TUBE & PIPE SIZE

Coupling With High Temp Collar

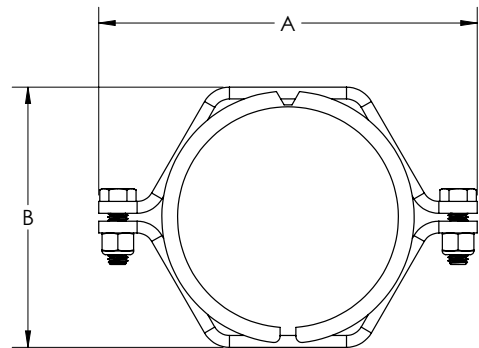
	Add to Part # Above	Half Coupling Only
Size	Part #	Part #
3/8" Pipe Coupling	-PC038	CPGPIPO-3/8
1/2" Pipe Coupling	-PC050	CPGPIPO-1/2
3/8" Rod Coupling	-RC038	CPGRODO-3/8
1/2" Rod Coupling	-RC050	CPGRODO-1/2



TUBE SIZE

Metal Detectable Hex Hangers

			Hanger w/ High-Temp Collar	Bracket w/ Nuts & Bolts Only	High -Temp Collar Only	Bolt Size
Size (Tube)	A	B	Part #	Part #	Part #	Part #
1/2"	2 1/4"	1 1/16"	HS-050T-M	BS-050T-C	CM-050T	1/4" x 3/4"
3/4"	2 5/8"	1 3/16"	HS-075T-M	BS-075T-C	CM-075T	1/4" x 3/4"
1"	3 3/8"	1 9/16"	HS-100T-M	BS-100T-C	CM-100T	5/16" x 1"
1 1/2"	3 3/4"	2 1/8"	HS-150T-M	BS-150T-C	CM-150T	5/16" x 1"
2"	4 7/16"	2 5/8"	HS-250T-M	BS-200T-C	CM-200T	5/16" x 1"
2 1/2"	4 15/16"	3 1/8"	HS-250T-M	BS-250T-C	CM-250T	5/16" x 1"
3"	5 9/16"	3 5/8"	HS-300T-M	BS-300T-C	CM-300T	5/16" x 1"
4"	6 5/8"	4 5/8"	HS-400T-M	BS-400T-C	CM-400T	5/16" x 1"
6"	9 3/16"	6 5/8"	HS-600T-M	BS-600T-C	CM-600T	5/16" x 1"



Typical Metal Detectable Collar:

- › Deflection temperature (@66 psi) 215°F.
- › Melting temperature approximately 300°F



Family-Owned Since 1970



All of our hex hangers are manufactured at our facility in the USA!

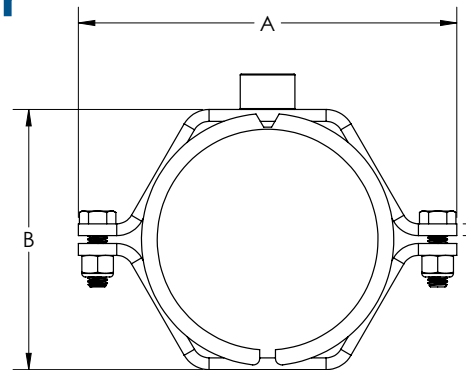
What started out in a garage in Winsted, MN has now grown into a 100,000 square foot manufacturing facility that employs 100 people. A family-owned and operated business with small-town American values and ethics.



TUBE SIZE

Coupling With Metal Detectable Collar

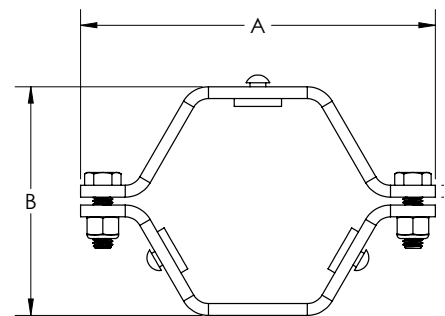
Size	Add to Part # Above	Half Coupling Only
	Part #	Part #
3/8" Pipe Coupling	-PC038	CPGPIPO-3/8
1/2" Pipe Coupling	-PC050	CPGPIPO-1/2
3/8" Rod Coupling	-RC038	CPGRODO-3/8
1/2" Rod Coupling	-RC050	CPGRODO-1/2



TUBE SIZE

Rubber Grommet Hex Hangers

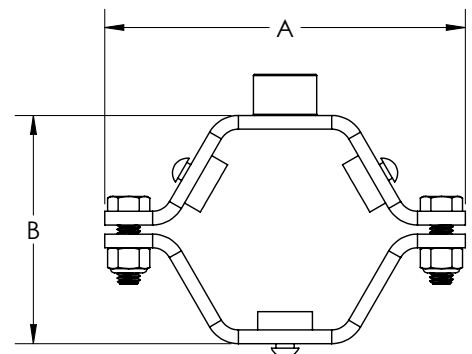
Size (Tube)	A	B	Grommet Qty & Size	Hanger w/ Alcryn Grommet	Hanger w/ Viton Grommet	Bracket w/ Nuts & Bolts Only	Bolt Size
				Part #	Part #	Part #	Part #
1/4"	2 1/4"	7/8"	1 ea. - 1/8, 1/4"	HS-025T-G	HS-025T-V	BK-025T-1H	1/4" x 3/4"
3/8"	2 1/4"	7/8"	2 - 1/8"	HS-038T-G	HS-038T-V	BK-025T-1H	1/4" x 3/4"
1/2"	3 3/8"	2 1/8"	3 - 3/8"	HS-050T-G	HS-050T-V	BS-100T-G	5/16" x 1"
3/4"	3 3/8"	2 1/8"	3 - 1/4"	HS-075T-G	HS-075T-V	BS-100T-G	5/16" x 1"
1"	3 3/8"	2 1/8"	3 - 1/8"	HS-100T-G	HS-100T-V	BS-100T-G	5/16" x 1"
1 1/4"	3 3/4"	2 1/8"	3 - 1/4"	HS-125T-G	HS-125T-V	BS-150T-G	5/16" x 1"
1 1/2"	3 3/4"	2 1/8"	3 - 1/8"	HS-150T-G	HS-150T-V	BS-150T-G	5/16" x 1"
2"	4 7/16"	2 5/8"	3 - 1/8"	HS-200T-G	HS-200T-V	BS-200T-G	5/16" x 1"
2 1/2"	4 15/16"	3 1/8"	3 - 1/8"	HS-250T-G	HS-250T-V	BS-250T-G	5/16" x 1"
3"	5 9/16"	3 5/8"	3 - 1/8"	HS-300T-G	HS-300T-V	BS-300T-G	5/16" x 1"
4"	6 5/8"	4 3/4"	4 - 1/8"	HS-400T-G	HS-400T-V	BS-400T-G	5/16" x 1"
5"	8 1/8"	5 5/8"	4 - 1/8"	HS-500T-G	HS-500T-V	BS-500T-G	5/16" x 1"
6"	9 3/16"	6 5/8"	5 - 1/8"	HS-600T-G	HS-600T-V	BS-600T-G	5/16" x 1"
8"	11 3/8"	8 3/4"	5 - 1/8"	HS-800T-G	HS-800T-V	BK-800T-1H	5/16" x 1"
10"	14 1/2"	10 1/2"	6 - 1/8"	HS-10.T-G	HS-10.T-V	BK-10.T-3H	3/8" x 1"
12"	16 5/8"	12 5/8"	6 - 1/8"	HS-12.T-G	HS-12.T-V	BK-12.T-3H	3/8" x 1"
14"	19"	14 3/4"	6 - 1/8"	HS-14.T-G	HS-14.T-V	BK-14.T-3H	3/8" x 1"



TUBE & PIPE SIZE

Coupling With Rubber Grommets

Size	Add to Part # Above	
	Part #	Part #
3/8" Pipe Coupling	-PC038	CPGPIPO-3/8
1/2" Pipe Coupling	-PC050	CPGPIPO-1/2
3/8" Rod Coupling	-RC038	CPGRODO-3/8
1/2" Rod Coupling	-RC050	CPGRODO-1/2



PIPE SIZE

Rubber Grommet Hex Hangers

Size (Pipe)	A	B	Grommet Qty & Size	Hanger w/ Alcryn Grommet	Hanger w/ Viton Grommet	Bracket w/ Nuts & Bolts Only	Bolt Size
				Part #	Part #	Part #	Part #
1/2"	3 3/8"	2 1/4"	3 - 1/4"	HS-050P-G	HS-050P-V	BS-100T-G	5/16" x 1"
3/4"	3 3/8"	2 3/16"	3 - 1/8"	HS-075P-G	HS-075P-V	BS-100T-G	5/16" x 1"
1"	3 3/4"	2 1/8"	3 - 1/4"	HS-100P-G	HS-100P-V	BS-150T-G	5/16" x 1"
1 1/4"	4 7/16"	2 3/4"	3 - 3/8"	HS-125P-G	HS-125P-V	BS-200T-G	5/16" x 1"
1 1/2"	4 7/16"	2 13/16"	3 - 1/4"	HS-150P-G	HS-150P-V	BS-200T-G	5/16" x 1"
2"	4 15/16"	3 1/4"	3 - 1/4"	HS-200P-G	HS-200P-V	BS-250T-G	5/16" x 1"
2 1/2"	5 9/16"	3 7/8"	3 - 1/4"	HS-250P-G	HS-250P-V	BS-300T-G	5/16" x 1"
3"	6 1/16"	4 5/16"	4 - 1/8"	HS-300P-G	HS-300P-V	BS-300P-G	5/16" x 1"
4"	7 1/2"	5 1/8"	4 - 1/8"	HS-400P-G	HS-400P-V	BS-400P-G	5/16" x 1"
5"	8 1/2"	6 3/8"	4 - 1/8"	HS-500P-G	HS-500P-V	BS-500P-G	5/16" x 1"
6"	9 7/8"	7 1/8"	5 - 1/8"	HS-600P-G	HS-600P-V	BS-600P-G	5/16" x 1"
8"	12 1/4"	9 3/8"	5 - 1/8"	HS-800P-G	HS-800P-V	BK-800P-2H	5/16" x 1"
10"	15 3/8"	11 3/8"	6 - 1/8"	HS-10.P-G	HS-10.P-V	BK-10.P-3H	3/8" x 1"
12"	17 1/2"	13 11/16"	6 - 1/8"	HS-12.P-G	HS-12.P-V	BK-12.P-3H	3/8" x 1"



Alcryn & Viton Grommets

Thickness	Alcryn	Viton
	Part #	Part #
1/8" Grommets	RG-013-A	RG-013-V
1/4" Grommets	RG-025-A	RG-025-V
3/8" Grommets	RG-038-A	RG-038-V
1/2" Grommets	RG-050-A	RG-050-V
5/8" Grommets	RG-063-A	RG-063-V



Typical Rubber Grommet:

- Alcryn Temperature Range 40°F to 257°F, 3/4" diameter with 5/16" pin
- Viton Temperature Range 73°F to 392°F, 3/4" diameter with 5/16" pin

U-Bolt Hangers

U-Bolts are available in multiple sizes to accommodate most applications. Constructed of heavy duty stainless steel for process piping and industrial applications.

- > Available in Tube and Pipe Size
- > Made in USA



TUBE SIZE U-Bolt Hangers

U-Bolt Size (Tube)	Plate Size	Rod Size	U-Bolt Hanger	Plate Only	U Bolt Only
			Part #	Part #	Part #
1/2"	3/16" X 3/4" X 1 7/8"	1/4"	UBT-050	UBT-050-P	UBT-050-U
3/4"	3/16" X 3/4" X 1 7/8"	1/4"	UBT-075	UBT-075-P	UBT-075-U
1"	3/16" X 3/4" X 2 1/8"	1/4"	UBT-100-UBP-075	UBT-100-P	UBT-100-U
1 1/2"	1/4" X 1" X 2 7/8"	5/16"	UBT-150	UBT-150-P	UBT-150-U
2"	1/4" X 1" X 3 3/8"	5/16"	UBT-200	UBT-200-P	UBT-200-U
2 1/2"	1/4" X 1" X 3 7/8"	5/16"	UBT-250	UBT-250-P	UBT-250-U
3"	1/4" X 1" X 4 3/8"	5/16"	UBT-300	UBT-300-P	UBT-300-U
4"	1/4" X 1" X 5 1/4"	5/16"	UBT-400	UBT-400-P	UBT-400-U
5"	1/4" X 1 1/4" X 6 1/2"	3/8"	UBT-500	UBT-500-P	UBT-500-U
6"	3/8" X 1 1/2" X 7 1/2"	3/8"	UBT-600	UBT-600-P	UBT-600-U
8"	3/8" X 1 1/2" X 9 1/2"	3/8"	UBT-800	UBT-800-P	UBT-800-U
10"	3/8" X 2" X 11 1/2"	3/8"	UBT-10.	UBT-10.-P	UBT-10.-U
12"	3/8" X 2" X 13 1/2"	3/8"	UBT-12.	UBT-12.-P	UBT-12.-U

PIPE SIZE

U-Bolt Hangers

U-Bolt Size (Pipe)	Plate Size	Rod Size	U-Bolt Hanger	Plate Only	U Bolt Only
			Part #	Part #	Part #
1/2"	3/16" X 3/4" X 1 7/8"	1/4"	UBP-050	UBP-050-P	UBP-050-U
3/4"	3/16" X 3/4" X 2 1/8"	1/4"	UBP-075	UBT-100-P	UBT-100-U
1"	3/16" X 3/4" X 2 1/2"	1/4"	UBP-100	UBP-100-P	UBP-050-U
1 1/4"	1/4" X 1" X 2 7/8"	5/16"	UBP-125	UBT-150-P	UBP-125-U
1 1/2"	1/4" X 1" X 3 1/8"	5/16"	UBP-150	UBP-150-P	UBP-150-U
2"	1/4" X 1" X 3 5/8"	5/16"	UBP-200	UBP-200-P	UBP-200-U
2 1/2"	1/4" X 1 1/4" X 5 1/8"	5/16"	UBP-250	UBP-250-P	UBP-250-U
3"	1/4" X 1 1/4" X 5 1/8"	3/8"	UBP-300	UBP-300-P	UBP-300-U
4"	1/4" X 1 1/4" X 6 1/8"	3/8"	UBP-400	UBP-400-P	UBP-400-U
5"	3/8" X 1 1/2" X 7 1/16"	3/8"	UBP-500	UBP-500-P	UBP-500-U
6"	3/8" X 1 1/2" X 8 1/4"	3/8"	UBP-600	UBP-600-P	UBP-600-U
8"	3/8" X 2" X 10 1/8"	3/8"	UBP-800	UBP-800-P	UBP-800-U
10"	3/8" X 2" X 12 1/4"	3/8"	UBP-10.	UBP-10.-P	UBP-10.-U
12"	1/4" X 1 1/2" X 14 5/8"	1/2"	UBP-12.	UBP-12.-P	UBP-12.-U



AWI also offers complete drain solutions.

AWI has been a trusted source in the stainless and sanitary drain market since 1970. We manufacture drains, trench drains and accessories such as cleanouts and hub drains. Ask your sales representative for a drain catalog or visit us at awimfg.com/floor-drains for more information.

Hex Hanger Packaging Options

Individually Bagged

This option is great for contractors as well as wholesalers.

Each hanger is placed in a durable bag that keeps all of the components in one place. This ensures fewer loose parts in the field and is also a great option for wholesalers who will not need to assemble loose hangers or break bundles to send individual hangers out.



Shrink-Wrapped on Boards

Shrink-wrapped and packaged on boards is another option we offer.

Hangers are placed on cardboard and shrink-wrapped in bundles. This option allows for multiple hangers per package. We understand that every customer has unique storage, warehousing or in the field requirements. Choose the option that works best for you and your situation.



Stainless Steel Components

In addition to our line of hex hangers, AWI also offers many other components used in process piping applications. From adjustable band clamps, pipe saddles and wall flanges we have you covered. Ask us about custom sizes or products.

Industries Served

- › Dairy
- › Brewery
- › Food Processing
- › Meat & Poultry
- › Beverage
- › Industrial

CUSTOM SIZES AVAILABLE UPON REQUEST

Adjustable Band Clamps

(19 Ga X 1" Wide)

Size	Part #
5" - 36"	CLAMP5 - 36
37" - 48"	CLAMP37-48
49" - 60"	CLAMP49-60
61" - 85"	CLAMP61-85



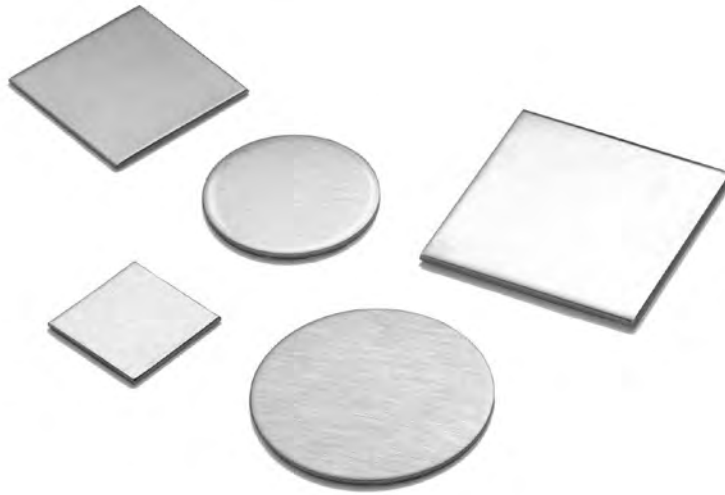
Adjustable Legs

Adjustable legs from AWI are manufactured from stainless steel and are often used on tanks, frames, and enclosures for our food industrial customers.



Size	Weight Capacity	Part #
1 1/4" Sch 10 X 4" long	2,000lbs	LGR-125400
1 1/2" Sch 10 x 6" long	4,500lbs	LGR-150600
1 1/2" Sch 10 x 6" long - All Stainless	4,500lbs	LGR-150600-SS
2" Sch 40 X 4" long	4,500lbs	LGR-200400
2" Sch 40 X 6" long	5,500lbs	LGR-200600
2 1/2" Sch 40 X 6" long	7,000lbs	LGR-250600
3" Sch 40 X 6" long	7,500lbs	LGR-300600
4" Sch 40 X 6" long	8,500lbs	LGR-400600
1 1/2" Square X 6 Long 11 GA	3,000lbs	LGS-150600
2" Square X 6" long 11ga	4,500lbs	LGS-200600

CUSTOM SIZES AVAILABLE UPON REQUEST



(SQUARE)

End Caps

12Ga

Size	Part #
1"	ECS-100-12G
1 1/2"	ECS-150-12G
2"	ECS-200-12G
2 1/2"	ECS-250-12G
3"	ECS-300-12G
4"	ECS-400-12G
2" X 3"	ECS-200300-12G
2" X 4"	ECS-200400-12G

TUBE SIZE (ROUND)

End Caps

16Ga

Size	Part #
1/2"	ECT-050-16G
3/4"	ECT-075-16G
1"	ECT-100-16G
1 1/2"	ECT-150-16G
2"	ECT-200-16G
2 1/2"	ECT-250-16G
3"	ECT-300-16G
4"	ECT-400-16G
5"	ECT-500-16G
6"	ECT-600-16G

PIPE SIZE (ROUND)

End Caps

16Ga

Size	Part #
1/2"	ECP-050-16G
3/4"	ECP-075-16G
1"	ECP-100-16G
1 1/4"	ECP-125-16G
1 1/2"	ECP-150-16G
2"	ECP-200-16G
2 1/2"	ECP-250-16G
3"	ECP-300-16G
4"	ECP-400-16G

Additional Charge Added To End Cap

Description	Add to end cap part #
Dished end cap	-D
Weld 1/2 nut to end cap	-N

CUSTOM SIZES AVAILABLE UPON REQUEST

Rings 16Ga

Size	Part #
1" ID X 1 1/2" OD	RNG-100150-16G
1 1/2" ID X 2" OD	RNG-150200-16G
1 1/2" ID X 3" OD	RNG-150300-16G
2" ID X 2 1/2" OD	RNG-200250-16G
2" ID X 3" OD	RNG-200300-16G
2" ID X 4" OD	RNG-200400-16G
2 1/2" ID X 3" OD	RNG-250300-16G
2 1/2" ID X 4" OD	RNG-250400-16G
3" ID X 4" OD	RNG-300400-16G



Tube & Pipe Saddles

TUBE SIZE

Tube Saddles

Size	Part #
1 1/2"	PST-150
2"	PST-200



PIPE SIZE

Sch 10 Pipe Saddles

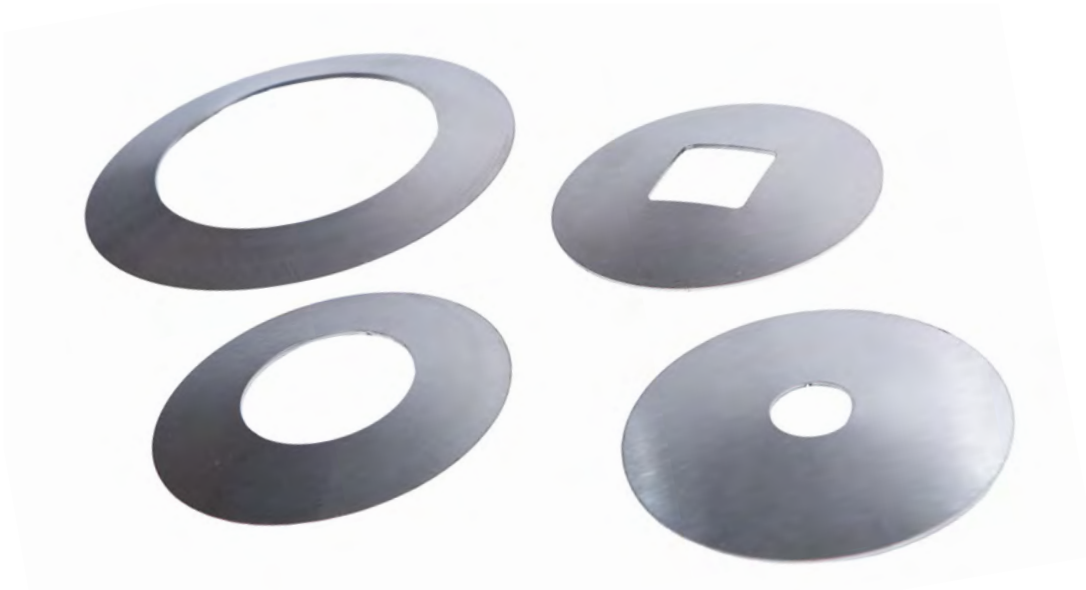
Size	Part #
1"	PSP-100-S10
1 1/4"	PSP-125-S10
1 1/2"	PSP-150-S10
2"	PSP-200-S10
3"	PSP-300-S10
4"	PSP-400-S10

PIPE SIZE

Sch 40 Pipe Saddles

Size	Part #
1"	PSP-100-S40
1 1/4"	PSP-125-S40
1 1/2"	PSP-150-S40
2"	PSP-200-S40
2.5"	PSP-250-S40
3"	PSP-300-S40
4"	PSP-400-S40

CUSTOM SIZES AVAILABLE UPON REQUEST



SQUARE

Wall Flanges

16Ga

Size	Part #
2" ID X 5" OD	WFS-200500-16G
1 1/2" ID X 5" OD	WFS-150500-16G

PIPE SIZE

Split Wall Flanges

16Ga

Size	Part #
1.315" X 5"	WFP-100500-16G-S
1.9" X 5"	WFP-150500-16G-S
2.375" X 5"	WFP-200500-16G-S
2.875" X 5"	WFP-250500-16G-S
3.5" X 6"	WFP-300600-16G-S
4.5" X 7"	WFP-400700-16G-S
5.563" X 9"	WFP-500900-16G-S
6.625" X 10"	WFP-60010.-16G-S
8.625" X 12"	WFP-80012.-16G-S

TUBE SIZE

Split Wall Flanges

16Ga

Size	Part #
1" X 5"	WFT-100500-16G-S
1.5" X 5"	WFT-150500-16G-S
2" X 5"	WFT-200500-16G-S
2.5" X 5"	WFT-250500-16G-S
3" X 6"	WFT-300600-16G-S
4" X 7"	WFT-400700-16G-S
5" X 8"	WFT-500800-16G-S
6" X 10"	WFT-60010.-16G-S
8" X 12"	WFT-80012.-16G-S

CUSTOM SIZES AVAILABLE UPON REQUEST

TUBE SIZE

Wall Flanges 16Ga

Tube Size	Dimensions	Part #
1/2"	1/2" ID X 3" OD	WFT-050300-16G
1/2"	1/2" ID X 5" OD	WFT-050500-16G
3/4"	3/4" ID X 3" OD	WFT-075300-16G
3/4"	3/4" ID X 5" OD	WFT-075500-16G
1"	1" ID X 3" OD	WFT-100300-16G
1"	1" ID X 5" OD	WFT-100500-16G
1 1/2"	1 1/2" ID X 5" OD	WFT-150500-16G
2"	2" ID X 5" OD	WFT-200500-16G
2 1/2"	2 1/2" ID X 5" OD	WFT-250500-16G
3"	3" ID X 6" OD	WFT-300600-16G
4"	4" ID X 7" OD	WFT-400700-16G
5"	5" ID X 8" OD	WFT-500800-16G
6"	6" ID X 10" OD	WFT-60010.-16G
8"	8" ID X 12" OD	WFT-80012.-16G
10"	10" ID X 14" OD	WFT-10.14.-14G
12"	12" ID X 16" OD	WFT-12.16.-14G

PIPE SIZE

Wall Flanges 16Ga

Pipe Size	Dimensions	Part #
1/2"	.84" ID X 5" OD	WFP-050500-16G
3/4"	1.05" ID X 5" OD	WFP-075500-16G
1"	1.315" ID X 5" OD	WFP-100500-16G
1 1/4"	1.66" ID X 5" OD	WFP-125500-16G
1 1/2"	1.9" ID X 5" OD	WFP-150500-16G
2"	2.375" ID X 5" OD	WFP-200500-16G
2 1/2"	2.875" ID X 5" OD	WFP-250500-16G
3"	3.5" ID X 6" OD	WFP-300600-16G
4"	4.5" ID X 7" OD	WFP-400700-16G
5"	5.563" ID X 9" OD	WFP-500900-16G
6"	6.625" ID X 10" OD	WFP-60010.-16G
8"	8.625" ID X 12" OD	WFP-80012.-16G
10"	10.75" ID X 14.75" OD	WFP-10.14.-14G-01
12"	12.75" ID X 16.75" OD	WFP-12.16.-14G-01

CUSTOM SIZES AVAILABLE UPON REQUEST



Wall Plates

Size	Part #
1/4" X 2" X 6"	WP-200600-025
1/4" X 2" X 7"	WP-200700-025
1/4" X 2 1/2" X 6"	WP-250600-025
1/4" X 2 1/2" X 7"	WP-250700-025
1/4" X 4" X 4"	WP-400400-025
1/4" X 6" X 6"	WP-600600-025
1/4" X 8" X 8"	WP-800800-025

Additional Charge For Holes	
Size	Add to Above Wall Plate Part #
1 Hole	-1
2 Holes	-2
3 Holes	-3
4 Holes	-4

Hole Sizes
Hole Sizes Available
5/16"
3/8"
7/16"
1/2"
9/16"
5/8"
11/16"
3/4"
13/16"
7/8"
15/16"
1"

CUSTOM SIZES AVAILABLE UPON REQUEST

Frequently Asked Questions

What temps are your hangers rated for?

Our rubber grommet style hangers and collar style hangers have different melting and deflection points as show in the table below.

Typical Unfilled Polypropylene:

- › Deflection Temperature (@264 psi) 120°F
- › Deflection Temperature (@66 psi) 225°F
- › Melting Temperature Approximately 329°F

Typical High Temp Collar:

- › Collars can withstand continuous temperature of 325°F.

Softening point = 374°F

Typical Metal Detectable Collar:

- › Deflection temperature (@66 psi) 215°F.
- › Melting temperature approximately 300°F

Typical Rubber Grommets:

- › Alcryn Temperature Range 40°F to 257°F, 3/4" diameter with 5/16" pin
- › Viton Temperature Range 73°F to 392°F, 3/4" diameter with 5/16" pin

What is Deflection Temp?

The deflection temperature is the temperature at which our PVC collars and rubber grommets will start to deform. This is the process before the actual melting temperature which is also shown in the description of our hangers.

Frequently Asked Questions

Are your legs sanitary?

We do not offer 3A legs. However, when they are placed with the right height adjustment customers can weld them into place and then they can be considered 3A. Once this weld is in place, they are water tight and non-adjustable.

What is your standard shipping method?

Our shipping method depends on your order but most hanger and component orders go out via UPS. Common carrier and truck shipments are used when the orders are too large to ship through UPS.

Can I get expedited shipping?

We do offer expedited orders on a case by case basis. We understand the urgency of plant shutdowns for maintenance and our large in stock quantity allows us to get product out to you quickly.

If it is a stock item, we do offer expediting shipping options via UPS. We offer 3rd day select, 2nd day air and next day air along with next day air Saturday.

What are your shipping cutoff times for stock items?

Ship Method	Days	Cut-Off Time
Ground	Monday - Thursday	2:00pm Central
	Friday	1:00pm Central
Expedited	Monday - Thursday	3:00pm Central
	Friday	2:00pm Central

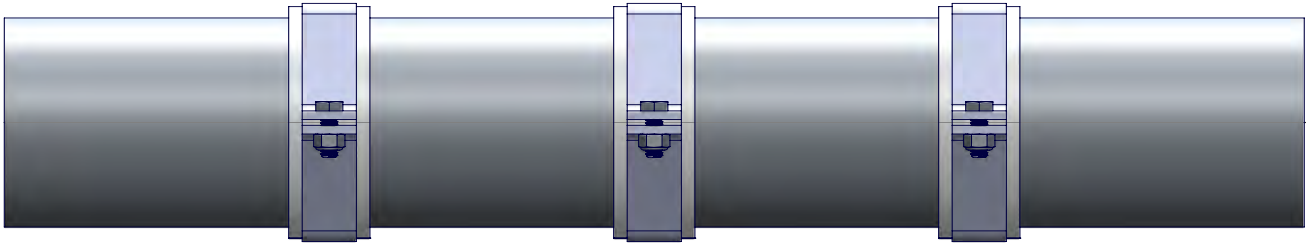
What is your transit time? How long will it take to get my order?

Please see the chart below, these times are estimates. For more information, visit our shipping page at awimfg.com/shipping.

Region	Transit Time
Midwest	1-2 Days
East	3-4 Days
West	4-5 Days
South	3-4 Days

Recommended Hanger Spacing

How far apart should I space my hangers when hanging them?



Tube Hanger Spacing	
Tube Size	Maximum Spacing (ft)
1/2"-3/4"	6
1" - 1.5"	8
2" - 3"	10
4" - 6"	12

Sch10 Pipe Hanger Spacing	
Pipe Size	Maximum Spacing (ft)
3/8" - 3/4"	6
1" - 1.25"	8
1.5" - 3"	10
4" - 8"	12

Sch40 Pipe Hanger Spacing	
Pipe Size	Maximum Spacing (ft)
1/2"	6
3/4"	6
1"	8
1.25"	8
1.5"	10
2"	10
3"	12
4"	16
>4"	16

Hangers and/or supports should be spaced as far apart as economically possible, with consideration to assure that the sag of the pipe between supports is within limits that will permit drainage and also avoid excessive bending stresses from concentrated loads such as valves and in-line equipment. Contractors/Installers shall use the maximum recommended spacing between pipe supports specified below. Spacing indicated below may differ from that listed in ANSI/MSS SP-69 & SP-58. Additional hangers may be necessary to adequately support concentrated loads such as valves, flanges, or instruments. Please note that these are estimates based on AWI's experiences in the industry.

ANSI Pipe Schedules

Blue figures indicate wall thickness in inches
Black figures indicate weight per foot in pounds

Pipe Size	OD in inches	5	10	20	30	40	STD	60	80	XH	100	120	140	160	XXH
1/8	.405	.035 .1383	.049 .1863			.068 .2447	.068 .2447		.095 .3145	.095 .3145					
1/4	.540	.049 .2570	.065 .3297			.088 .4248	.088 .4248		.119 .5351	.119 .5351					
3/8	.675	.049 .3276	.065 .4235			.091 .5676	.091 .5676		.126 .7388	.126 .7388					
1/2	.840	.065 .5383	.083 .6710			.109 .8510	.109 .8510		.147 1.088	.147 1.088				.187 1.304	.294 1.714
3/4	1.050	.065 .6838	.083 .8572			.113 1.131	.113 1.131		.154 1.474	.154 1.474				.218 1.937	.308 2.441
1	1.315	.065 8678	.109 1.404			.133 1.679	.133 1.679		.179 2.172	.179 2.172				.250 2.844	.358 3.659
1-1/4	1.660	.065 1.107	.109 1.806			.140 2.273	.140 2.273		.191 2.997	.191 2.997				.250 3.765	.382 5.214
1-1/2	1.900	.065 1.274	.109 2.085			.145 2.718	.145 2.718		.200 3.631	.200 3.631				.281 4.859	.400 6.408
2	2.375	.065 1.604	.109 2.638			.154 3.653	.154 3.653		.218 5.022	.218 5.022				.343 7.444	.436 9.029
2-1/2	2.875	.083 2.475	.120 3.531			.203 5.793	.203 5.793		.276 7.661	.276 7.661				.375 10.01	.552 13.70
3	3.500	.083 3.029	.120 4.332			.216 7.576	.216 7.576		.300 10.25	.300 10.25				.437 14.32	.600 18.58
3-1/2	4.0	.083 3.472	.120 4.973			.226 9.109	.226 9.109		.318 12.51	.318 12.51					.636 22.85
4	4.5	.083 3.915	.120 5.613			.237 10.79	.237 10.79	.281 12.66	.337 14.98	.337 14.98		.437 19.01		.531 22.51	.674 27.54
4-1/2	5.0						.247 12.53			.355 17.61					.710 32.53
5	5.563	.109 6.349	.134 7.770			.258 14.62	.258 14.62	.375 20.78	.375 20.78		.500 27.04			.625 32.96	.750 38.55
6	6.625	.109 7.585	.134 9.289			.280 18.97	.280 18.97	.432 28.57	.432 28.57		.562 36.39			.718 45.30	.864 53.16
7	7.625						.301 23.57			.500 38.05					.875 63.08
8	8.625	.109 9.914	.148 13.40	.250 22.36	.277 24.70	.322 28.55	.322 28.55	.406 35.64	.500 43.39	.500 43.39	.593 50.87	.718 60.63	.812 67.76	.906 74.69	.875 72.42
9	9.625						.342 33.90			.500 48.72					
10	10.75	.134 15.19	.165 18.70	.250 28.04	.307 34.24	.365 40.48	.365 40.48	.500 54.74	.593 64.33	.500 54.74	.718 76.93	.843 89.20	1.000 104.1	1.125 115.7	
11	11.75						.375 45.55			.500 60.07					
12	12.75	.165 22.18	.180 24.20	.250 33.38	.330 43.77	.406 53.53	.375 49.56	.562 73.16	.687 88.51	.500 65.42	.843 107.2	1.000 125.5	1.125 139.7	1.312 160.3	
14	14.0		.250 36.71	.312 45.68	.375 54.57	.437 63.37	.375 54.57	.593 84.91	.750 106.1	.500 72.09	.937 130.7	1.093 150.7	1.250 170.2	1.406 189.1	
16	16.0		.250 42.05	.312 52.36	.375 62.58	.500 82.77	.375 62.58	.656 107.5	.843 136.5	.500 82.77	1.031 164.8	1.218 192.3	1.437 223.5	1.593 245.1	
18	18.0		.250 47.39	.312 59.03	.437 82.06	.562 104.8	.375 70.59	.750 138.2	.937 170.8	.500 93.45	1.156 208.0	1.375 244.1	1.562 274.2	1.781 308.5	
20	20.0		.250 52.73	.375 78.60	.500 104.1	.593 122.9	.375 78.60	.812 166.4	1.031 208.9	.500 104.1	1.280 256.1	1.500 296.4	1.750 341.1	1.968 379.0	
22	22.0		.250 58.07	.375 86.61	.500 114.8		.375 86.61	.875 197.4	1.125 250.8	.500 114.8	1.375 302.9	1.625 353.6	1.875 403.0	2.125 451.1	
24	24.0		.250 63.41	.375 94.62	.562 140.8	.687 171.2	.375 94.62	.968 238.1	1.218 296.4	.500 125.5	1.531 367.4	1.812 429.4	2.062 483.1	2.343 541.9	
26	26.0		.312 85.60	.508 136.2			.375 102.6			.500 136.2					
28	28.0		.312 92.26	.500 146.8	.625 182.7		.375 110.6			.500 146.8					
30	30.0		.312 98.33	.500 157.5	.625 196.1		.375 118.6			.500 157.5					
32	32.0		.312 105.6	.500 168.2	.625 209.4	.688 230.1	.375 126.7			.500 168.2					
34	34.0		.344 123.7	.500 178.9	.625 222.8	.688 244.8	.375 134.7			.500 178.9					
36	36.0		.312 118.9	.500 189.6	.625 236.1	.750 282.3	.375 142.7			.500 189.6					
42	42.0						.375 166.7			.500 221.6					
48	48.0						.375 190.7			.500 253.6					

Facility Information

100,000 Sq. Ft. Manufacturing Floor Space

Laser Cutting

- › (3) 8000 Watt Fiber Trumpf Lasers 7'X 13'
 - › 1-1/4" Mild Steel
 - › 1 1/2" Stainless Steel
 - › 1 1/2" Aluminum
 - › 3/8" Titanium and Brass

Welding

- › 12' Seam Welder
- › Spot Welders
- › Mig Welding Machines
- › Tig Welding Machines
- › Robotic Welding

Shearing

- › 1/2" X 12' Shear
- › 1/4" X 10' Shear
- › 3/8" X 12' Circle Shear

Machining

- › 66 Ton Ironworker
- › Bridgeport Mills
- › 15" X 48" Gap Lathe
- › 6" X 18" Surface Grinder

Punching/Stamping

- › 88 Ton Punch Press OBI
- › 75 Ton Punch Press OBI
- › 35 Ton Punch Press OBI

Tube Laser Cutting

- › (BLM) Adige LT 8
 - › Up to 28' lengths
 - › Round, square, rectangular, angle iron, channel and flat bar
 - › Round tube from .5" to 8.625"
 - › Square tube from .5" to 8"
 - › Rectangular from .5" to 8"

Forming

- › 485 Ton Press Brake-14'
- › 190 Ton Press Brake-12'
- › 135 Ton Press Brake-12'
- › 60 Ton Press Brake
- › 35 Ton Electric Brake 4'

Rolling

- › 10' X 4 Roller (up to 1/2")
- › 5' X 4 Roller (up to 1/2")
- › 3' X 3 Roller (up to 10 ga)

Other

- › 3/8" X 12' Head Flanger
- › Automatic Feed Bandsaw
- › Surface Grinder
- › Bead Blast Booth
- › Virtek Quality Scanner
- › Faro Arm



AWI MANUFACTURING

Phone

320.485.2471

Address

PO Box 909, 3902 230th Street
Winsted, Minnesota 55395

Email

customerservice@awimfg.com

awimfg.com