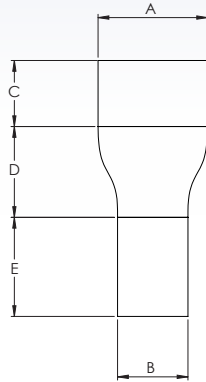


# Hub Drains

## SPEC SHEET



Size	A	B	C	D	E	Thickness	304 Part Number	316 Part Number
<b>3X2</b>	3.50	2.38	4.00	3.50	6.00	Sch 10	HD-3X2-10	HD-3X2-10-316
						Sch 40	HD-3X2-40	HD-3X2-40-316
<b>4X2</b>	4.50	2.38	4.00	4.00	6.00	Sch 10	HD-4X2-10	HD-4X2-10-316
						Sch 40	HD-4X2-40	HD-4X2-40-316
<b>4X3</b>	4.50	3.50	4.00	4.00	6.00	Sch 10	HD-4X3-10	HD-4X3-10-316
						Sch 40	HD-4X3-40	HD-4X3-40-316
<b>6X3</b>	6.63	3.50	4.00	5.50	6.00	Sch 10	HD-6X3-10	HD-6X3-10-316
						Sch 40	HD-6X3-40	HD-6X3-40-316
<b>6X4</b>	6.63	4.50	4.00	5.50	6.00	Sch 10	HD-6X4-10	HD-6X4-10-316
						Sch 40	HD-6X4-40	HD-6X4-40-316
<b>8X4</b>	8.63	4.50	4.00	6.00	6.00	Sch 10	HD-8X4-10	HD-8X4-10-316
						Sch 40	HD-8X4-40	HD-8X4-40-316
<b>8X5</b>	8.63	5.56	4.00	6.00	6.00	Sch 10	HD-8X5-10	HD-8X5-10-316
						Sch 40	HD-8X5-40	HD-8X5-40-316
<b>8X6</b>	8.63	6.63	4.00	6.00	6.00	Sch 10	HD-8X6-10	HD-8X6-10-316
						Sch 40	HD-8X6-40	HD-8X6-40-316
<b>10X4</b>	10.75	4.50	4.00	7.00	6.00	Sch 10	HD-10X4-10	HD-10X4-10-316
						Sch 40	HD-10X4-40	HD-10X4-40-316
<b>10X6</b>	10.75	6.63	4.00	7.00	6.00	Sch 10	HD-10X6-10	HD-10X6-10-316
						Sch 40	HD-10X6-40	HD-10X6-40-316
<b>10X8</b>	10.75	8.63	4.00	7.00	6.00	Sch 10	HD-10X8-10	HD-10X8-10-316
						Sch 40	HD-10X8-40	HD-10X8-40-316
<b>12X8</b>	12.75	8.63	4.00	8.00	6.00	Sch 10	HD-12X8-10	HD-12X8-10-316
						Sch 40	HD-12X8-40	HD-12X8-40-316
<b>12X10</b>	12.75	10.75	4.00	8.00	6.00	Sch 10	HD-12X10-10	HD-12X10-10-316
						Sch 40	HD-12X10-40	HD-12X10-40-316



**Contact AWI Manufacturing for other custom options.**

Winsted, Minnesota | Phone 320.485.2471 | Email [customerservice@awimfg.com](mailto:customerservice@awimfg.com) | [awimfg.com](http://awimfg.com)