



STAINLESS STEEL DRAIN SYSTEMS

FLOOR DRAINS

TRENCH DRAINS

SLOT DRAINS

FLOOR SINKS

CLEANOUTS

HUB DRAINS

P-TRAPS

LATERALS



TABLE OF CONTENTS

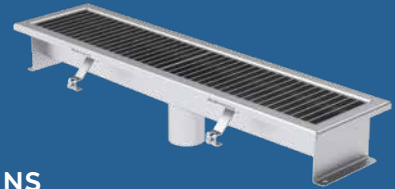
05

FLOOR DRAINS



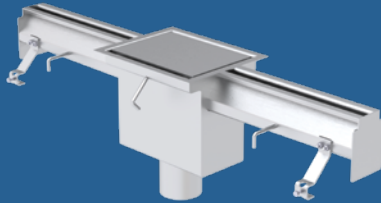
15

TRENCH DRAINS



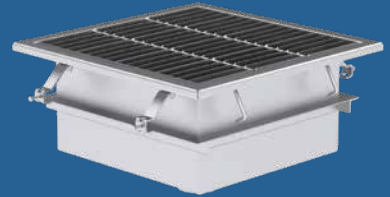
23

SLOT DRAINS



28

FLOOR SINKS



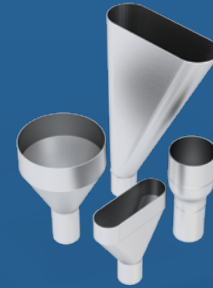
28

CLEANOUTS



31

HUB DRAINS



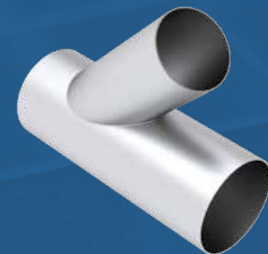
31

P-TRAPS



31

LATERALS



ABOUT AWI DRAINS

Trusted by Industry Leaders, Built to Last.

AWI stainless steel floor drains have been the benchmark of reliability and quality in the food and beverage industries for over five decades. As a family-owned business since 1970, we've built our reputation on delivering top-tier products and exceptional service that keeps customers coming back.

Why Choose AWI?

Proven Excellence

Our drains are trusted by the food processing, dairy, beverage, meat, and poultry industries. From single drains to entire plant builds our proven track record makes us the go-to choice for leading brands, contractors, and engineers.

Made in the USA

All AWI products are proudly made in the USA, ensuring consistent quality and craftsmanship you can depend on.

Service That Goes Beyond

Experience unparalleled support with our personal touch:

- > We answer the phone—no automated systems.
- > Rapid and accurate quotes tailored to your needs.
- > A commitment to making your experience exceptional.

Competitive Pricing, Superior Quality

We strive to offer high-quality drain products at prices that work within your budget.

"We have been working with AWI for almost 15 years. Over that time, they have become our closest and most reliable vendor. They have an uncanny ability to understand and meet our ever-evolving requirements. I am proud to state that AWI is a true partner and an undeniable factor in the ongoing success of our business."

—VALUED AWI CUSTOMER

Ready to elevate your next drain project? Contact us today and discover the AWI difference!

CRAFTED FOR PERFORMANCE. BUILT FOR DURABILITY.

AWI sets the benchmark for quality, reliability, and safety in stainless steel drains. Designed with advanced features for superior functionality and lasting durability, our drains are built to perform in even the most demanding environments.

Key Features at a Glance

- ✔ Built tough: Rated for heavy equipment use up to 10,000 lbs (ASME 112.6.3).
- ✔ Seamless construction: 12 Ga. seamless body design for maximum durability and strength.
- ✔ Heavy duty: Standard 1/2" top plate ensures extra durability under extreme conditions.
- ✔ Sanitary and corrosive resistant: Ideal for industries where cleanliness and longevity matter.
- ✔ Large inventory: Standard products available in stock, ready for quick shipping.
- ✔ ISO 9001:2015 Certified: Delivering consistent manufacturing excellence you can rely on.
- ✔ NSF Certified: Meeting the strictest standards for public health protection.
- ✔ USDA Approved and 3A SSI Standards Compliant: Designed to exceed food safety requirements.
- ✔ Made in the USA: Proudly manufactured to ensure superior quality and craftsmanship.

At AWI Manufacturing, quality and safety are more than priorities—they're our promise. Reach out to us today to discover how our stainless steel drain systems can elevate your project.



INDUSTRIES

Exceptional stainless steel solutions for any industry.

Although different industries face different challenges, all industries need commercial solutions that are sanitary and easy to maintain. AWI is the leading stainless steel manufacturer for commercial floor and trench drain systems, floor sinks, and more. Our experts are ready to address your industry's unique requirements. Explore some commercial sectors that rely on our stainless steel drain and product solutions.



Food and Beverage



Dairy Production



Brewery & Winery



Meat Processing



Hatchery



Pet Food



Seafood



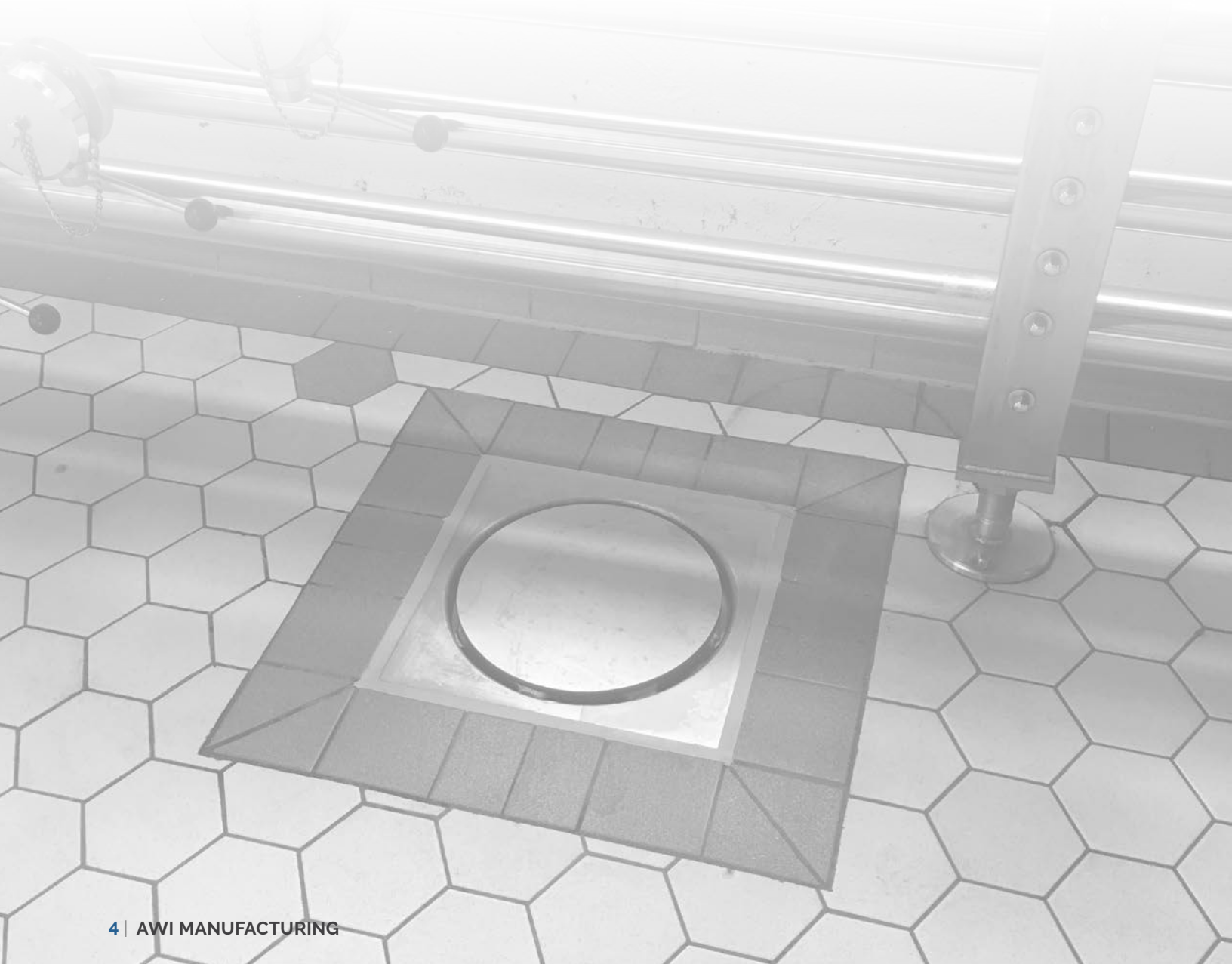
Bakery



Produce

DURABLE. RELIABLE. BUILT TO LAST.

Our stainless steel floor drain systems are designed to withstand heavy equipment, prevent build-up, and deliver unmatched performance. Trusted by the food, dairy, beverage, meat, and poultry industries for over five decades.



FLOOR DRAINS

Exceptional stainless steel solutions for any industry.

Our stainless steel floor drains have been the standard in the food and beverage industry for over 50 years. Our proven track record and commitment to quality has allowed us to stay a preferred drain choice for food processing, dairy, beverage, meat, and poultry industries.

BASKET

The standard baskets are designed for excellent cleanability and optimal flow rates, making it suitable for most applications.

CEMENT RING

Standard on all drains.

BODY

The 12 gauge seamless body design ensures durability and a smooth, sanitary, and corrosion-resistant surface for long-lasting performance.

COVER

Cover options are engineered to endure heavy forklift traffic, ensuring durability in demanding environments.

TOP PLATE

The floor drain is equipped with a heavy-duty 1/2" standard top plate, providing exceptional strength and stability for high-traffic and load-bearing applications.

RADIUS CORNERS

The large radius corners eliminate bacteria harborage points.



Standard Drain



Made in the USA

Our complete line of commercial and industrial stainless steel drain systems are proudly built to last in the USA.

Scan the QR code for more details.

CONSTRUCTION

- > Stainless steel
- > Rated for heavy equipment use
- > Sanitary and corrosive resistant
- > USDA Approved
- > ISO 9001:2015 Certified

Standard Drains

Square top drains have been popular for decades, offering versatility across all applications, including tile, dairy brick, and concrete. Round top drains, ideal for concrete installations, reduce the need for alignment with nearby equipment and walls.

Square Top



Round Top



STANDARD

- > 304 or 316 stainless steel
- > 6" body depth
- > Top plate size: 12" square or round
- > Outlet size: 2" | 3" | 4" | 6" | 8"
- > Outlet type: Schedule 10 or Schedule 40
- > Basket styles: standard, slotted, old style
- > Cover styles: solid, full grate, half grate, slotted, center hole, finger notch, sealed (o-ring), drilled, locking



**Magnetic Quick Lock
System Compatible**

Deep Profile Drains

This style drain is used in areas that will see high volumes and often located directly under discharge from equipment.

Square Top



Round Top



- > 304 or 316 stainless steel
- > 10" body depth
- > Top plate size: 12" square or round
- > Outlet size: 2" | 3" | 4" | 6" | 8"
- > Outlet type: Schedule 10 or Schedule 40
- > Basket styles: deep profile, standard, slotted, old style, dome strainer
- > Cover styles: solid, full grate, half grate, slotted, center hole, finger notch, sealed (o-ring), drilled



**Magnetic Quick Lock
System Compatible**

Low Profile Drains

Used in situations where depths are limited and shallow outlet is required.

Square Top



Round Top



- > 304 or 316 stainless steel
- > 2.5" body depth
- > Top plate size: 12" square or round
- > Outlet size: 2" | 3" | 4" | 6" | 8"
- > Outlet type: Schedule 10 or Schedule 40
- > Basket styles: low profile
- > Cover styles: solid, full grate, half grate, slotted, center hole, finger notch, sealed (o-ring), drilled, locking

Cone Bottom Drains

Used in situations where more pitch to the outlet is required than our standard drain.

Square Top



Round Top



- > 304 or 316 stainless steel
- > 6" body depth
- > Top plate size: 12" square or round
- > Outlet size: 4" | 6" | 8"
- > Outlet type: Schedule 10 or Schedule 40
- > Basket styles: standard, slotted, old style
- > Cover styles: solid, full grate, half grate, slotted, center hole, finger notch, sealed (o-ring), drilled

Side Outlet Drains

Used in situations where depths are limited and a shallow outlet is required.

Square Top



Round Top



- > 304 or 316 stainless steel
- > 6" body depth
- > Top plate size: 12" square or round
- > Outlet size: 2" | 3" | 4"
- > Outlet type: Schedule 10
- > Basket styles: standard, slotted, old style
- > Cover styles: solid, full grate, half grate, slotted, center hole, finger notch, sealed (o-ring), drilled

Membrane Ring Drains

Used when a floor requires a water proof membrane. Drain also includes weep holes to allow water to seep into the drain.

Square Top



Round Top



- > 304 or 316 stainless steel
- > Body depth: 6" | 10"
- > Top plate size: 12" square or round
- > Outlet size: 2" | 3" | 4" | 6" | 8"
- > Outlet type: Schedule 10 or Schedule 40
- > Basket styles: standard, slotted, old style
- > Cover styles: solid, full grate, half grate, slotted, center hole, finger notch, sealed (o-ring), drilled, locking



Magnetic Quick Lock System Compatible

Trap Primer Drains

A trap primer is installed on drains that do not see wash downs very often. The trap primer helps keep a water seal in the p-trap from drying out.

Square Top



Round Top



- > 304 or 316 stainless steel
- > Body depth: 6" | 10"
- > Top plate size: 12" square or round
- > Outlet size: 2" | 3" | 4" | 6" | 8"
- > Outlet type: Schedule 10 or Schedule 40
- > Basket styles: standard, slotted, old style
- > Cover styles: solid, full grate, half grate, slotted, center hole, finger notch, sealed (o-ring), drilled, locking



**Magnetic Quick Lock
System Compatible**

Medium Duty Drains

Used in low-traffic, non-process areas such as hallways or restrooms.

Round Top

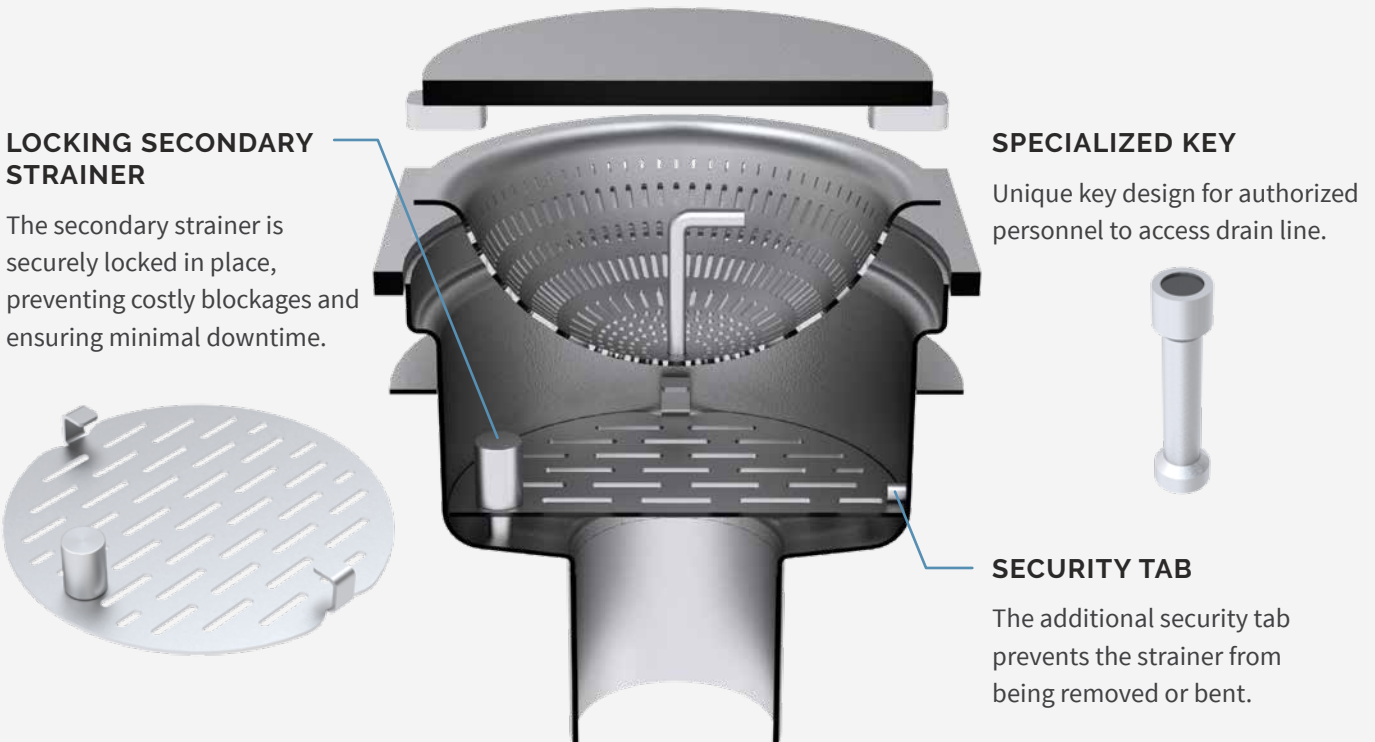


- > 304 or 316 stainless steel
- > 1" body depth
- > Top plate size: 8" round
- > Outlet size: 2" | 3" | 4"
- > Outlet type: Schedule 10
- > Outlet strainer
- > Medium duty 3/8" cover standard

Magnetic Quick Lock System

Our tamper-proof drain system features our innovative magnetic quick lock system.

Our magnetic quick lock system can be incorporated into many of our drain designs. Designed with stainless steel construction, this system ensures the highest safety and hygiene standards. The unique key design minimizes the risk of being lost or misplaced, providing an added layer of security.



The Magnetic Quick Lock System icon indicates compatible products.

Authorized Access

With the locking strainer feature, you have complete control over what goes down your drains, preventing unwanted materials from causing blockages. This system is ideal for maintaining a clean and efficient operation, ensuring only authorized access.



CONSTRUCTION

- > Stainless steel
- > Rated for heavy equipment use
- > Sanitary and corrosive resistant
- > USDA Approved
- > ISO 9001:2015 Certified

Drain Baskets

All of our floor drain baskets offer a universal fit for our standard drain bodies. Our standard basket offers superior clean ability and optimal flow rates for most applications. We also designed it to prevent standing water from collecting. Just another way we are ensuring a sanitary design. If you need more capacity then choose from our traditional styles that offer a deeper profile and higher flow rate.

Standard Basket

P/N: FA-BSKT-P



A standard basket is included with all drains unless otherwise requested.

Slotted Basket

P/N: FA-BSKT-S



Slotted basket design allows for maximum flow.

Old Style Basket

P/N: FA-BSKT-O



Original basket option that's standard on competitors' drains.

Deep Profile Basket

P/N: FA-BSKT-D



Deep profile design used in our deep profile drain bodies.

Low Profile Basket

P/N: FA-BSKT-L



Low profile design used in our low profile drain bodies.

Drain Covers

AWI offers many cover options for your stainless steel drains. Designed for the food and beverage industries, our covers are a sanitary design and built to withstand heavy forklift traffic.

Solid Cover

Load Rating: Special Duty (10,000 lbs)
P/N: FA-CVER-SC



Full Grate

Load Rating: Medium Duty (5,000 lbs)
P/N: FA-CVER-FG



Half Grate

Load Rating: N/A
P/N: FA-CVER-HG



Slotted Cover

Load Rating: Medium Duty (5,000 lbs)
P/N: FA-CVER-SL



Center Hole

Load Rating: Special Duty (10,000 lbs)
P/N: FA-CVER-CH



Finger Notch

Load Rating: Special Duty (10,000 lbs)
P/N: FA-CVER-FN



Sealed Cover

Load Rating: Special Duty (10,000 lbs)
P/N: FA-CVER-OC



O-Ring

Locking Cover

Load Rating: Special Duty (10,000 lbs)
P/N: FA-CVER-LC



Drilled Cover

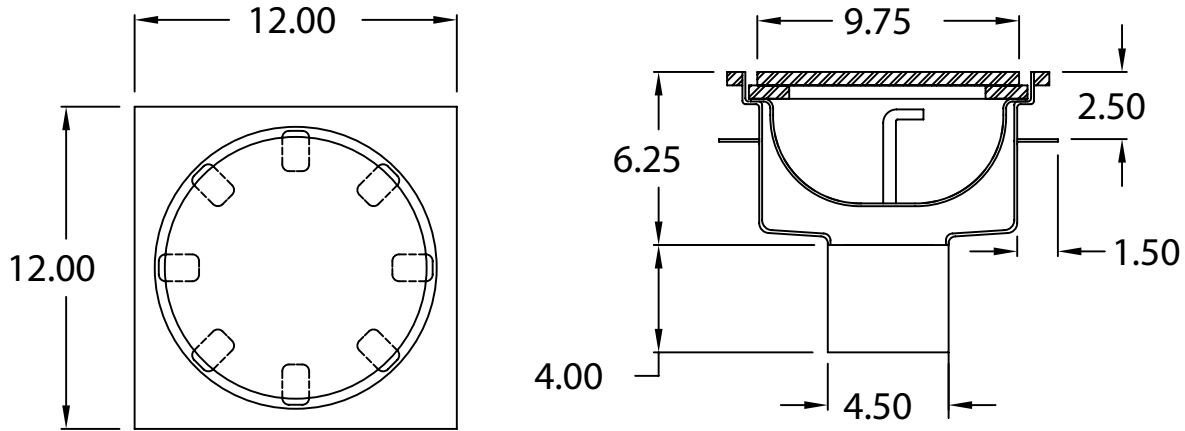
Load Rating: Extra Heavy Duty (10,000 lbs)
P/N: FA-CVER-DC



FD4 Series Floor Drain

SPEC SHEET

STAINLESS STEEL FLOOR DRAINS



Material Type

- 304 stainless steel
- 316 stainless steel

Top Profile

- Square top
- Round top

Outlet Size

- 2"
- 3"
- 4"
- 6"
- 8"

Outlet Type

- Schedule 10
- Schedule 40

Baskets

- Standard basket
- Slotted basket
- Old style basket
- Locking basket

Covers

- Solid
- Full grate
- Half grate
- Slotted
- Center hole
- Finger notch
- Sealed (o-ring)
- Locking
- Drilled

Cover Options

- Slip resistant surface

Outlet Options

- NPT male threaded
- NPT female threaded

Other Options

- Trap primer
- P-trap
- P-trap and cleanout combo
- Bolt down secondary strainer
- Membrane ring w/ weep holes
- Magnetic locking secondary strainer

Body Type

- Standard profile (6" Deep)
- Low profile (2.5" Deep)
- Deep profile (10" Deep)
- Side outlet
- Cone bottom



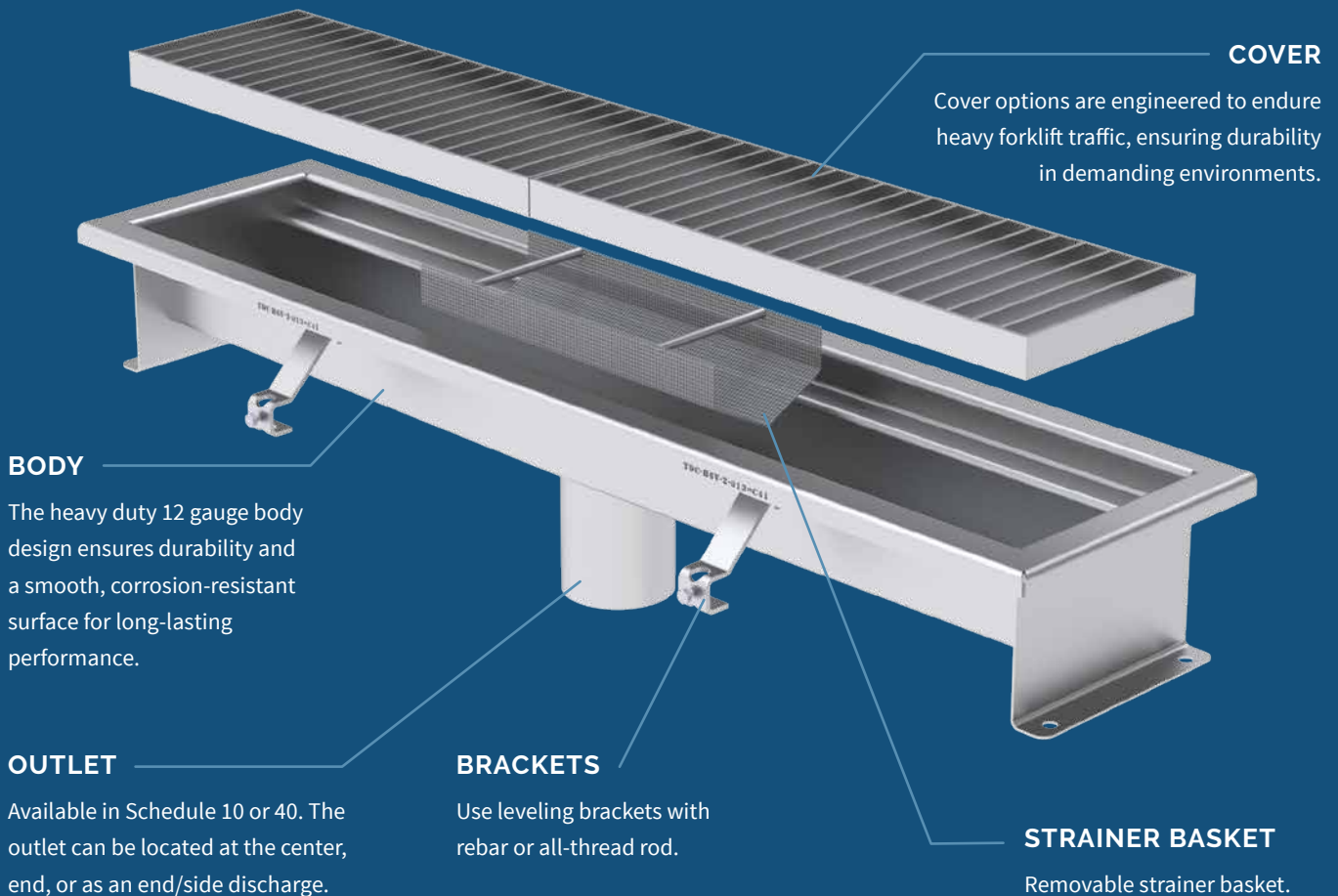
We recently worked with AWI on a project that included over 7,000 feet of trench drains and more than 300-floor drains. This was a massive project for everyone involved and they knocked it out of the park. Nothing ever goes perfectly on a project of this scale but their ability to adapt and help us keep the concrete pours moving was appreciated by everyone involved!

—MECHANICAL CONTRACTOR, FOOD & BEVERAGE INDUSTRY

TRENCH DRAINS

Quality and craftsmanship are at the core of our process.

Our trench drains are crafted from thicker materials to ensure durability and reliability. Using thinner materials can lead to issues like warping after welding and higher labor costs during installation. Drawing on our expertise, we aim to design stainless steel trench drains that are easy to install and deliver exceptional fit and finish.



STAINLESS STEEL TRENCH DRAINS



Made in the USA

Our complete line of commercial and industrial stainless steel drain systems are proudly built to last in the USA.

Scan the QR code for more details.

CONSTRUCTION

- > 304 or 316 stainless steel
- > 1/8" per foot slope or custom
- > Rated for heavy equipment use
- > Sanitary and corrosive resistant
- > ISO 9001:2015 Certified

Trench Drains

V-bottom trench drains are the preferred choice for most applications, promoting efficient drainage and minimizing standing water. This design is the standard for installations requiring greater depth.

TDV Series | V-Bottom



- > 304 or 316 stainless steel
- > Width: 4" | 6" | 9" | 12"
- > Length: available in any typical length
- > Slope: standard 1/8" per foot (custom slope available)
- > Outlet: center, end, end/side discharge
- > Outlet type: Schedule 10 or Schedule 40
- > Cover styles: bar grate, solid, slotted, channel cover (light duty)
- > Sump: 12" long in-line sump, 24" long in-line sump, or no sump (bottom outlet only)



**Magnetic Quick Lock
System Compatible**

Trench Drains

Flat bottom trench drains are generally used in shallow applications.

TDF Series | Flat Bottom



- > 304 or 316 stainless steel
- > Width: 4" | 6" | 9" | 12"
- > Length: available in any typical length
- > Slope: standard 1/8" per foot (custom slope available)
- > Outlet: center, end, end/side discharge
- > Outlet type: Schedule 10 or Schedule 40
- > Cover styles: bar grate, solid, slotted, channel cover (light duty)
- > Sump: 12" long in-line sump, 24" long in-line sump, or no sump (bottom outlet only)

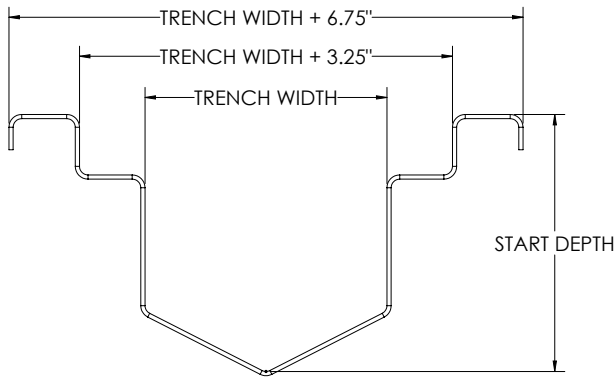


**Magnetic Quick Lock
System Compatible**

Trench Drains

SPEC SHEET

TDV Series | V-Bottom



Trench Length

_____ Feet

Trench Width

- 4"
- 6" (standard)
- 9" (standard)
- 12"
- Other _____

Start Depth

- 5" (standard)
- Other _____

Material Thickness

- 12 GA (standard)

Material Type:

- 304 stainless steel (standard)
- 316 stainless steel

Slope/Ft

- 1/8" (standard)
- 1/4"
- Other _____

Outlet Size

- 3"
- 4" (standard)
- 6"
- Other _____

Outlet Schedule

- Schedule 10
- Schedule 40

Outlet Location

- Center
- End
- End/Side

Outlet Strainer

- Yes (standard)

Sump Basin

- No (outlet only)
- 12" long
- 24" long
- Other _____

Cover Options (Forklift Rated)

- Bar grate
- Solid plate (w/perimeter drainage)

Cover Options (Non-Forklift Rated)

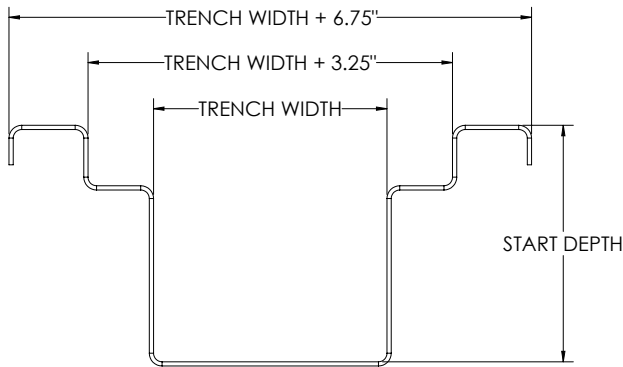
- 10 GA perforated grate
- 10 GA slotted grate
- Chem grate

STAINLESS STEEL TRENCH DRAINS

Trench Drains

SPEC SHEET

TDF Series | Flat Bottom



STAINLESS STEEL TRENCH DRAINS

Trench Length

_____ Feet

Trench Width

- 4"
- 6" (standard)
- 9" (standard)
- Other _____

Start Depth

- 3" (standard)
- Other _____

Material Thickness

- 12 GA (standard)

Material Type

- 304 stainless steel (standard)
- 316 stainless steel

Slope/Ft

- 1/8" (standard)
- 1/4"
- Other _____

Outlet Size

- 3"
- 4" (standard)
- 6"
- Other _____

Outlet Schedule

- Schedule 10
- Schedule 40

Outlet Location

- Center
- End
- End/Side

Outlet Strainer

- Yes

Sump Basin

- No (outlet only)
- 12" long
- 24" long
- Other _____

Cover Options (Forklift Rated)

- Bar grate
- Solid plate (w/perimeter drainage)

Cover Options (Non-Forklift Rated)

- 10 GA perforated grate
- 10 GA slotted grate
- Chem grate



We got our drains installed over the weekend—they look awesome! You guys do great work!

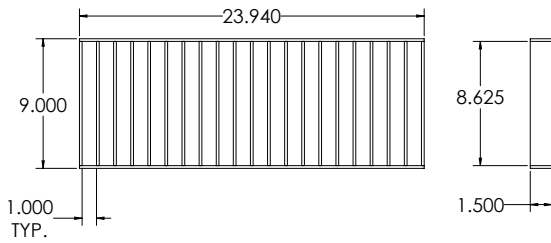
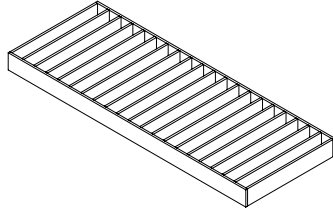
—BREWERY IN COLORADO

Trench Covers

SPEC SHEET

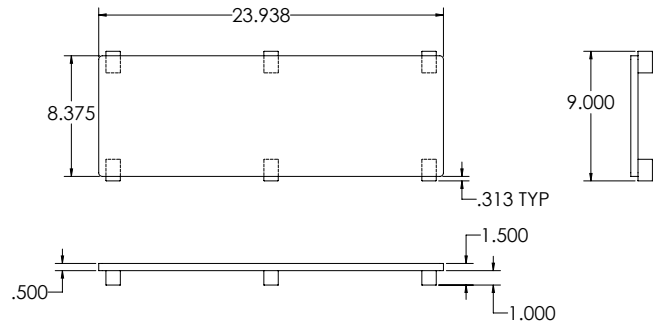
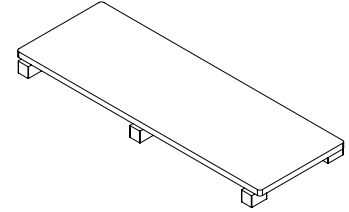
Bar Grate

- > 3/16" or 1/4" X 1-1/2" construction
- > Load rating:
 - > 7" width = 10,000 lbs
 - > 9" width = 10,000 lbs
 - > 12" width = 10,000 lbs
 - > 15" width = 7,500 lbs



Solid

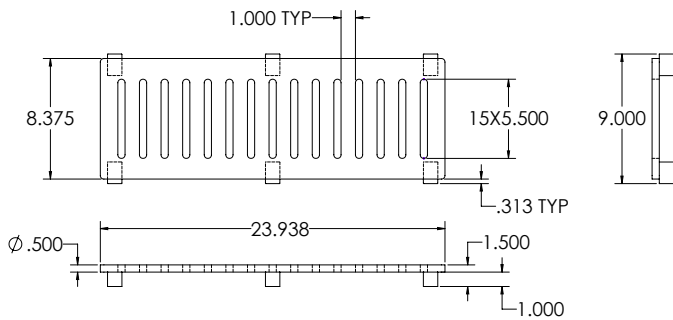
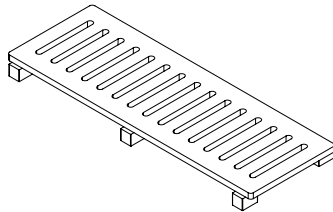
- > 1/2" construction
- > Load rating:
 - > 7" width = 10,000 lbs
 - > 9" width = 10,000 lbs
 - > 12" width = 10,000 lbs
 - > 15" width = 10,000 lbs



STAINLESS STEEL TRENCH DRAINS

Slotted

- > 1/2" construction
- > Load rating:
 - > 7" width = 5,000 lbs
 - > 9" width = 5,000 lbs
 - > 12" width = 2,000 lbs
 - > 15" width = 2,000 lbs



Installing a quality trench drain is very important, but the cover you use on drains is equally important. Our strict quality standards ensure you'll receive a stainless steel cover that can withstand high use.

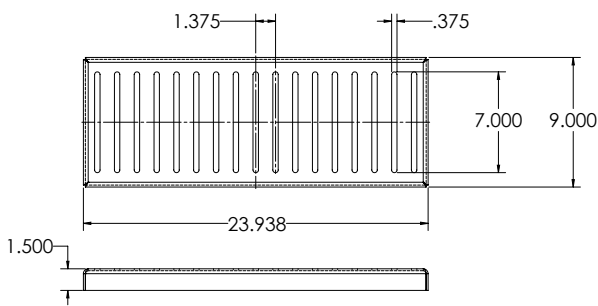
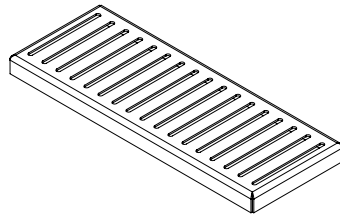
- > Made in the USA
- > ISO Certified



Trench Covers

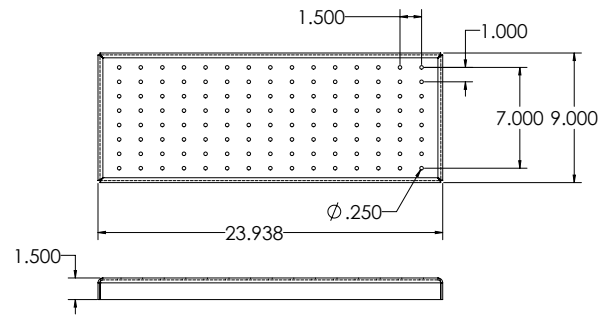
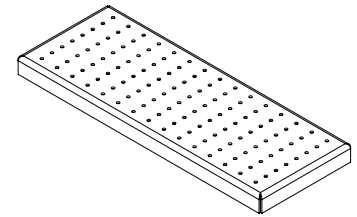
Formed Slotted

- > 10 Ga construction
- > Pedestrian rated:
under 2,000 lbs



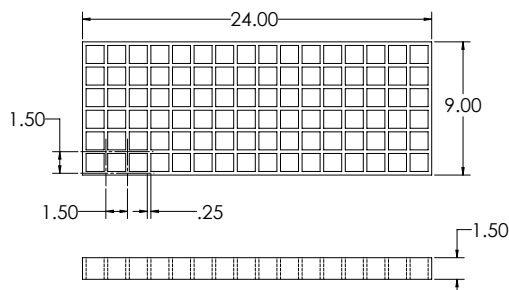
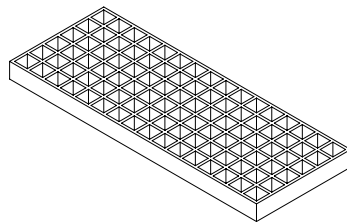
Perforated

- > 10 Ga construction
- > ADA compliant and heel-proof
- > Pedestrian rated:
under 2,000 lbs



Chem Grate

- > Fiberglass construction
- > Pedestrian rated:
under 2,000 lbs



A wide selection of stainless steel drain grates/trench covers ensure that you will have the correct grate for your drain application. Trust AWI to provide quality solutions.

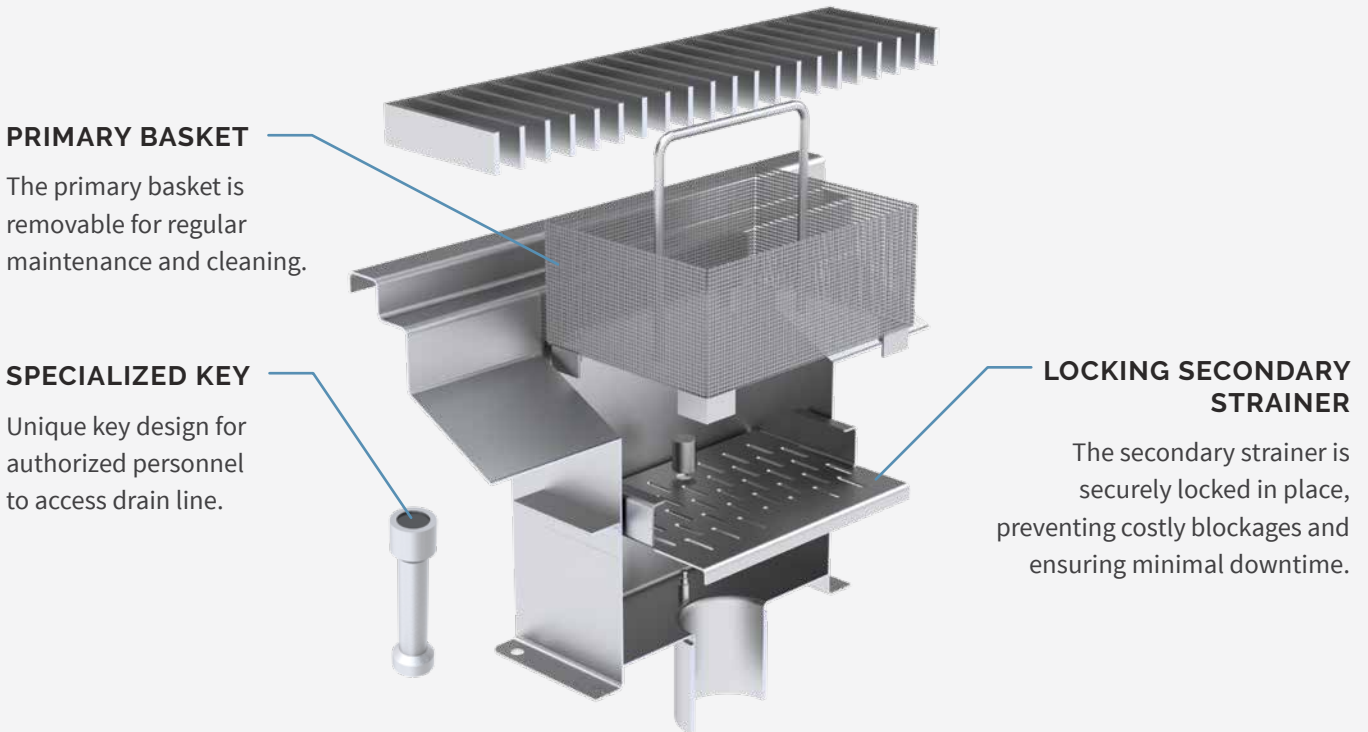
- > Multiple cover styles offered
- > Custom designs available
- > Most styles in stock

STAINLESS STEEL TRENCH DRAINS

Magnetic Quick Lock System

Our tamper-proof drain system features our innovative magnetic quick lock system.

Our magnetic quick lock system can be incorporated into our trench drain systems. Designed with stainless steel construction, this system ensures the highest safety and hygiene standards. The unique key design minimizes the risk of being lost or misplaced, providing an added layer of security.



STAINLESS STEEL TRENCH DRAINS



The Magnetic Quick Lock System icon indicates compatible products.

Authorized Access

With the locking strainer feature, you have complete control over what goes down your drains, preventing unwanted materials from causing blockages. This system is ideal for maintaining a clean and efficient operation, ensuring only authorized access.



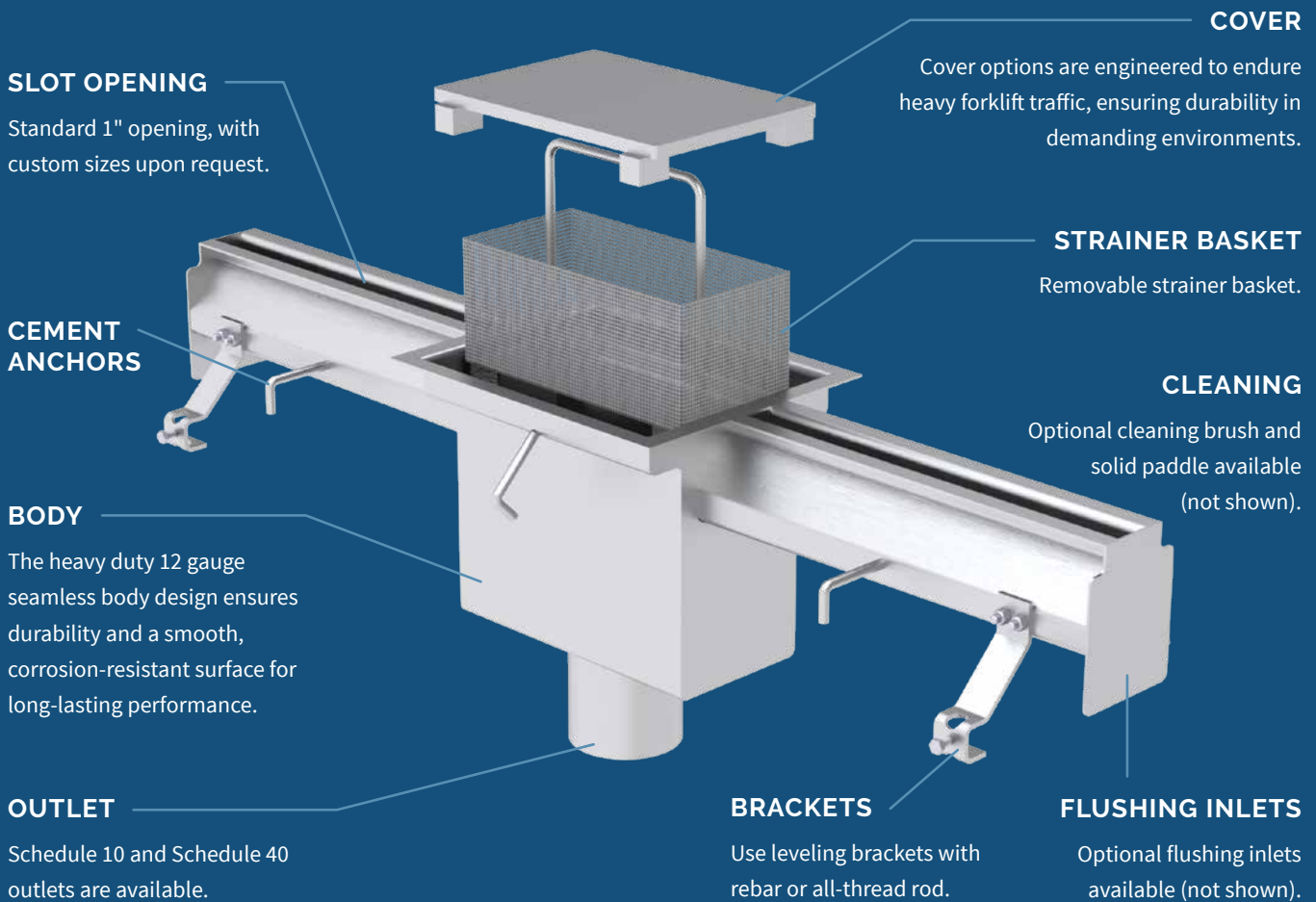
CONSTRUCTION

- > Stainless steel
- > Rated for heavy equipment use
- > Sanitary and corrosive resistant
- > ISO 9001:2015 Certified

SLOT DRAINS

Quality and craftsmanship are at the core of our process.

Our slot drains are crafted from thicker materials to ensure durability and reliability. Using thinner materials can lead to issues like warping after welding and higher labor costs during installation. Drawing on our expertise, we aim to design stainless steel slot drains that are easy to install and deliver exceptional fit and finish.



Made in the USA

Our complete line of commercial and industrial stainless steel drain systems are proudly built to last in the USA.

Scan the QR code for more details.

CONSTRUCTION

- > 304 or 316 stainless steel
- > 1/8" per foot slope or custom
- > Rated for heavy equipment use
- > Sanitary and corrosive resistant
- > ISO 9001:2015 Certified

Slot Drains

Straight slot drains are ideal for low-volume wash-down areas and applications with depth limitations.

SDSW Series | Straight



- > 304 or 316 stainless steel
- > Opening width: 1.5" or custom
- > Length: available in any typical length
- > Catch basin: center or end



**Magnetic Quick Lock
System Compatible**

Slot Drains

Teardrop slot drains are designed to handle high water volumes without the need for grating.

SDTW Series | Teardrop



- > 304 or 316 stainless steel
- > Opening width: 1" or custom
- > Length: available in any typical length
- > Catch basin: center or end
- > Flushing inlets optional



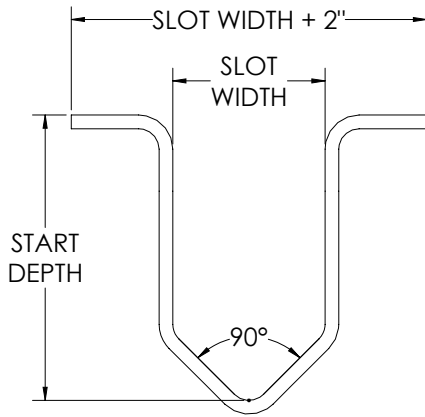
**Magnetic Quick Lock
System Compatible**

STAINLESS STEEL SLOT DRAINS

Slot Drains

SPEC SHEET

SDSW Series | Straight



Slot Length

_____ Feet

Slot Width

- 1.5" (standard)
- Other _____

Material Thickness

- 12 GA (standard)

Material Type

- 304 stainless steel (standard)
- 316 stainless steel

Slope/Ft

- 1/8" (standard)
- Other _____

Sump Basin

- Center
- End

Outlet Size

- 3"
- 4" (standard)
- 6"
- Other

Outlet Schedule

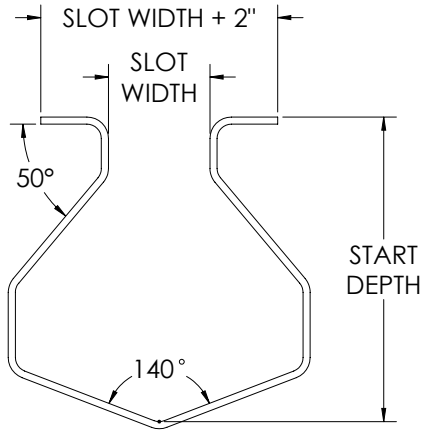
- Schedule 10
- Schedule 40

Slot drains may be sent in multiple sections depending on overall length.

Slot Drains

SPEC SHEET

SDTW Series | Teardrop



Slot Length

_____ Feet

Slot Width

- 1" (standard)
- Other _____

Material Thickness

- 12 GA (standard)

Material Type

- 304 stainless steel (standard)
- 316 stainless steel

Slope/Ft

- 1/8" (standard)
- Other _____

Sump Basin

- Center
- End

Outlet Size

- 3"
- 4" (standard)
- 6"
- Other

Outlet Schedule

- Schedule 10
- Schedule 40

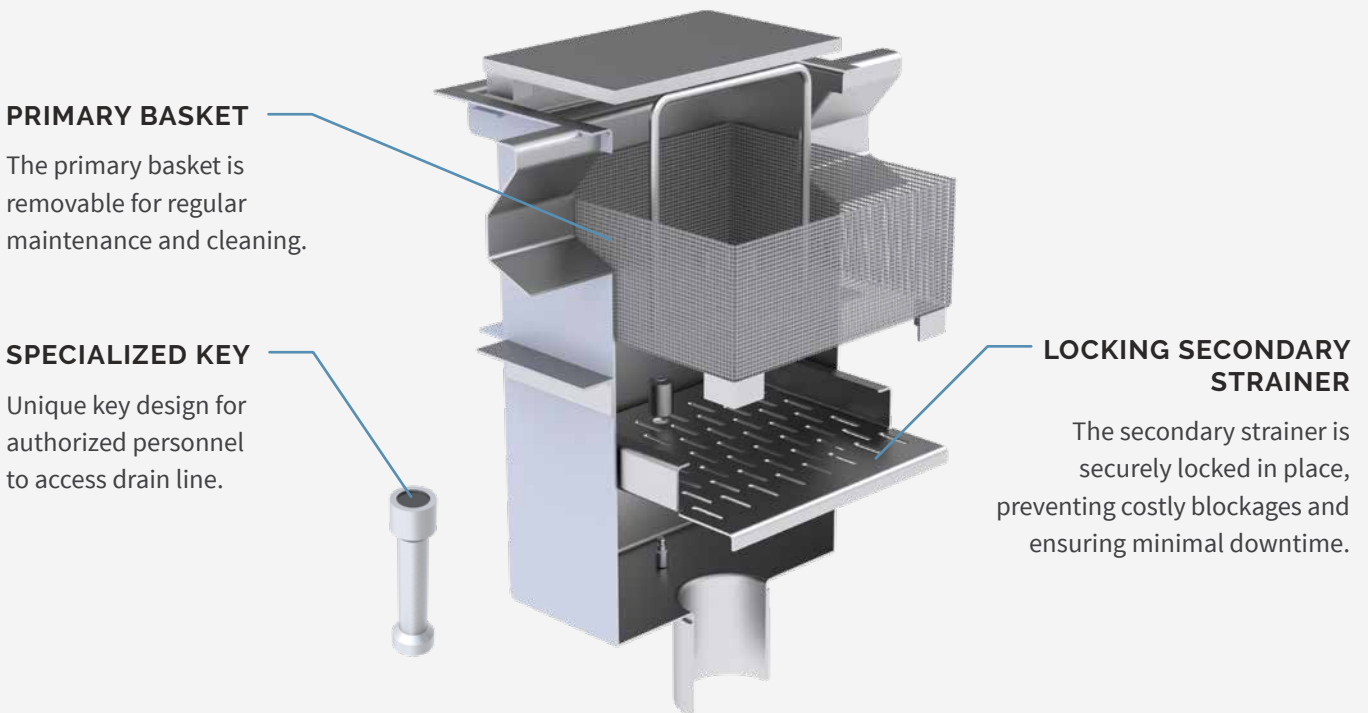
Slot drains may be sent in multiple sections depending on overall length.

STAINLESS STEEL SLOT DRAINS

Magnetic Quick Lock System

Our tamper-proof drain system features our innovative magnetic quick lock system.

Our magnetic quick lock system can be incorporated into our slot drain systems. Designed with stainless steel construction, this system ensures the highest safety and hygiene standards. The unique key design minimizes the risk of being lost or misplaced, providing an added layer of security.



The Magnetic Quick Lock System icon indicates compatible products.

Authorized Access

With the locking strainer feature, you have complete control over what goes down your drains, preventing unwanted materials from causing blockages. This system is ideal for maintaining a clean and efficient operation, ensuring only authorized access.



CONSTRUCTION

- > Stainless steel
- > Rated for heavy equipment use
- > Sanitary and corrosive resistant
- > ISO 9001:2015 Certified

Cleanouts

Cleanouts are designed for easy access to trunk lines for cleaning and come standard with a PVC plug and an o-ring seal.

Standard



Adjustable



- > Standard 3", 4", 6" and 8"
- > T-304 and T-316 construction
- > Standard PVC or brass plug
- > O-ring sealed surface
- > Bead blast finish

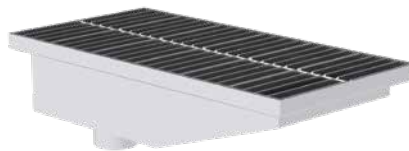
Floor Sinks / Kettle Drains

Floor sinks and kettle drains are built to handle high water volumes and are typically installed near or beneath equipment with large discharge requirements.

Floor Sink

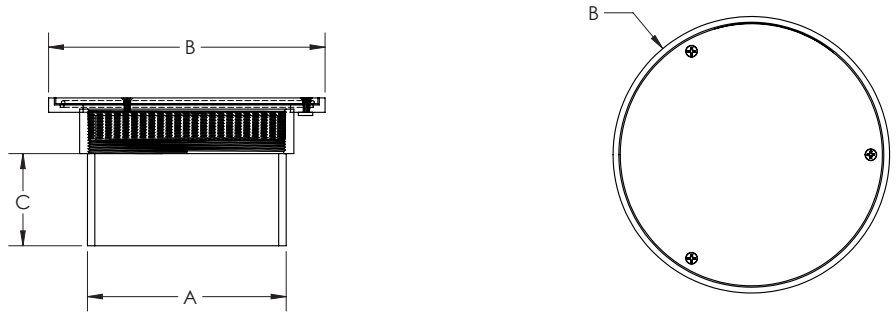


Kettle Drain



- > 304 or 316 stainless steel
- > Outlet size: 4" | 6" | 8" | 10" | 12"
- > Depth: 6" | 12" | 18" | 24" | 30"
- > Length: 12" | 18" | 24" | 30"
- > Width: 12" | 18" | 24" | 30"

Cleanouts



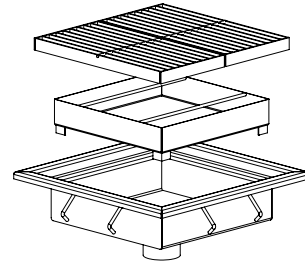
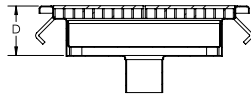
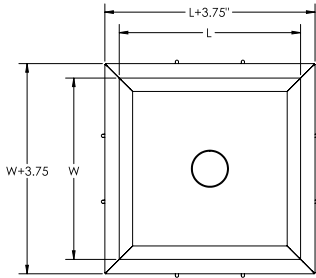
304 & 316 Stainless Steel

Size	A	B	C	Plug Type	304 Part Number	316 Part Number
3	3.38	8.00	4.00	PVC	CO-3	CO-3-316
				Brass	CO-3-BR	CO-3-BR-316
4	4.50	8.00	4.00	PVC	CO-4	CO-4-316
				Brass	CO-4-BR	CO-4-BR-316
6	6.63	10.00	4.00	PVC	CO-6	CO-6-316
				Brass	CO-6-BR	CO-6-BR-316
8	8.63	12.00	4.00	PVC	CO-8	CO-8-316
				Brass	CO-8-BR	CO-8-BR-316

Add the suffix "-ADJ" to the part number (P/N) of any 4" or 6" cleanout to make it adjustable.

Floor Sinks

SPEC SHEET



4"Outlet

Length "L"	Width "W"				Depth "D"
	12	18	24	30	
12	FS-121206-B41	FS-121806-B41	FS-122406-B41	FS-123006-B41	6
	FS-121212-B41	FS-121812-B41	FS-122412-B41	FS-123012-B41	12
18	FS-121806-B41	FS-181806-B41	FS-182406-B41	FS-183006-B41	6
	FS-121812-B41	FS-181812-B41	FS-182412-B41	FS-183012-B41	12
	FS-181218-B41	FS-181818-B41	FS-182418-B41	FS-183018-B41	18
24	FS-122406-B41	FS-182406-B41	FS-242406-B41	FS-243006-B41	6
	FS-122412-B41	FS-182412-B41	FS-242412-B41	FS-243012-B41	12
	FS-241218-B41	FS-182418-B41	FS-242418-B41	FS-243018-B41	18
	FS-241224-B41	FS-241824-B41	FS-242424-B41	FS-243024-B41	24
30	FS-123012-B41	FS-183012-B41	FS-243012-B41	FS-303012-B41	12
	FS-301218-B41	FS-183018-B41	FS-243018-B41	FS-303018-B41	18
	FS-301224-B41	FS-301824-B41	FS-243024-B41	FS-303024-B41	24
	FS-301230-B41	FS-301830-B41	FS-302430-B41	FS-303030-B41	30

6"Outlet

Length "L"	Width "W"				Depth "D"
	12	18	24	30	
12	FS-121206-B61	FS-121806-B61	FS-122406-B61	FS-123006-B61	6
	FS-121212-B61	FS-121812-B61	FS-122412-B61	FS-123012-B61	12
18	FS-121806-B61	FS-181806-B61	FS-182406-B61	FS-183006-B61	6
	FS-121812-B61	FS-181812-B61	FS-182412-B61	FS-183012-B61	12
	FS-181218-B61	FS-181818-B61	FS-182418-B61	FS-183018-B61	18
24	FS-122406-B61	FS-182406-B61	FS-242406-B61	FS-243006-B61	6
	FS-122412-B61	FS-182412-B61	FS-242412-B61	FS-243012-B61	12
	FS-241218-B61	FS-182418-B61	FS-242418-B61	FS-243018-B61	18
	FS-241224-B61	FS-241824-B61	FS-242424-B61	FS-243024-B61	24
30	FS-123012-B61	FS-183012-B61	FS-243012-B61	FS-303012-B61	12
	FS-301218-B61	FS-183018-B61	FS-243018-B61	FS-303018-B61	18
	FS-301224-B61	FS-301824-B61	FS-243024-B61	FS-303024-B61	24
	FS-301230-B61	FS-301830-B61	FS-302430-B61	FS-303030-B61	30

P-Traps

P-traps are designed to efficiently direct waste flow and prevent harmful backflow of odors, while allowing easy maintenance access down the line. Offered in standard or custom sizes, these American-made assemblies deliver exceptional durability and performance in any drainage application.

- > 304 or 316 stainless steel
- > Available in 1" through 16"
- > Schedule 10 or Schedule 40
- > Corrosion-resistant, sanitary design



Laterals

Lateral fittings are designed for smooth, corrosion-resistant flow in permanent, CIP-friendly installations. Offered in 304 and 316 stainless and a variety of sizes, these butt-weld 45° fittings deliver long-lasting performance.

- > 304 or 316 stainless steel
- > Available in 1" through 8", other custom sizes available
- > Schedule 10 or Schedule 40
- > Corrosion-resistant



Hub Drains

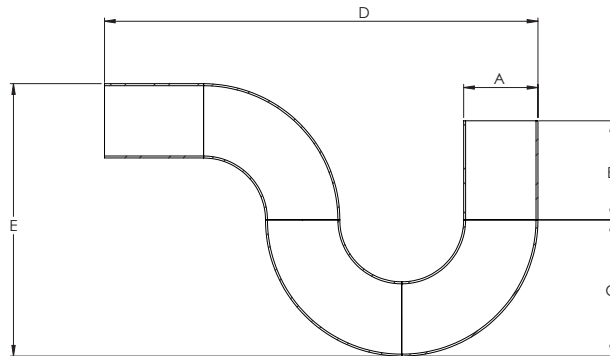
Hub drains deliver a durable, sanitary solution for above-ground installations, accommodating multiple drainage lines and offering an attractive glass bead finish. Available in standard sizes or custom configurations, these high-quality drains are ideal for the food and beverage industries.

- > 304 or 316 stainless steel
- > Glass bead finish
- > Round or oval
- > Contact AWI for oval options



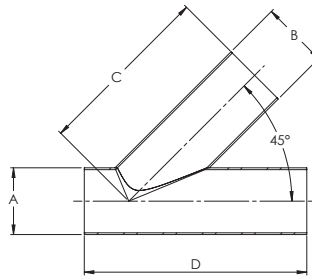
P-Traps

SPEC SHEET



304 & 316 Stainless Steel

Size	A	B	C	D	E	Thickness	304 Part Number	316 Part Number
1.25	1.66	3.00	2.71	9.46	5.41	Sch 10	PT-1.2510	PT-1.2510-316
						Sch 40	PT-1.2540	PT-1.2540-316
1.5	1.90	3.00	3.20	10.70	6.40	Sch 10	PT-1.510	PT-1.510-316
						Sch 40	PT-1.540	PT-1.540-316
2	2.38	4.00	4.19	14.19	8.38	Sch 10	PT-210	PT-210-316
						Sch 40	PT-240	PT-240-316
3	3.50	6.00	6.25	21.25	12.50	Sch 10	PT-310	PT-310-316
						Sch 40	PT-340	PT-340-316
4	4.50	6.00	8.25	26.25	16.50	Sch 10	PT-410	PT-410-316
						Sch 40	PT-440	PT-440-316
6	6.63	6.00	12.31	36.31	24.63	Sch 10	PT-610	PT-610-316
						Sch 40	PT-640	PT-640-316
8	8.63	8.00	16.31	48.31	32.63	Sch 10	PT-810	PT-810-316
						Sch 40	PT-840	PT-840-316
10	10.75	10.00	20.38	60.38	40.75	Sch 10	PT-1010	PT-1010-316
						Sch 40	PT-1040	PT-1040-316
12	12.75	10.00	24.38	70.38	48.75	Sch 10	PT-1210	PT-1210-316
						Sch 40	PT-1240	PT-1240-316
14	14.00	12.00	28.00	82.00	56.00	Sch 10	PT-1410	PT-1410-316
						Sch 40	PT-1440	PT-1440-316
16	16.00	12.00	32.00	92.00	64.00	Sch 10	PT-1610	PT-1610-316
						Sch 40	PT-1640	PT-1640-316

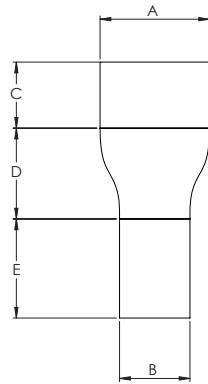


304 & 316 Stainless Steel

Size	A	B	C	D	Thickness	304 Part Number	316 Part Number
1.5	1.90	1.90	7.00	9.00	Sch 10	LAT45-1.5X1.5-10	LAT45-1.5X1.5-10-316
					Sch 40	LAT45-1.5X1.5-40	LAT45-1.5X1.5-40-316
2	2.38	2.38	8.00	10.50	Sch 10	LAT45-2X2-10	LAT45-2X2-10-316
					Sch 40	LAT45-2X2-40	LAT45-2X2-40-316
3x2	3.50	2.38	8.88	10.75	Sch 10	LAT45-3X2-10	LAT45-3X2-10-316
					Sch 40	LAT45-3X2-40	LAT45-3X2-40-316
3	3.50	3.50	10.00	13.00	Sch 10	LAT45-3X3-10	LAT45-3X3-10-316
					Sch 40	LAT45-3X3-40	LAT45-3X3-40-316
4x2	4.50	2.38	12.00	15.00	Sch 10	LAT45-4X2-10	LAT45-4X2-10-316
					Sch 40	LAT45-4X2-40	LAT45-4X2-40-316
4x3	4.50	3.50	10.88	12.81	Sch 10	LAT45-4X3-10	LAT45-4X3-10-316
					Sch 40	LAT45-4X3-40	LAT45-4X3-40-316
4	4.50	4.50	12.00	15.00	Sch 10	LAT45-4X4-10	LAT45-4X4-10-316
					Sch 40	LAT45-4X4-40	LAT45-4X4-40-316
6x2	6.63	2.38	14.50	18.00	Sch 10	LAT45-6X2-10	LAT45-6X2-10-316
					Sch 40	LAT45-6X2-40	LAT45-6X2-40-316
6x3	6.63	3.50	14.50	18.00	Sch 10	LAT45-6X3-10	LAT45-6X3-10-316
					Sch 40	LAT45-6X3-40	LAT45-6X3-40-316
6x4	6.63	4.50	14.50	18.00	Sch 10	LAT45-6X4-10	LAT45-6X4-10-316
					Sch 40	LAT45-6X4-40	LAT45-6X4-40-316
6	6.63	6.63	14.50	18.00	Sch 10	LAT45-6X6-10	LAT45-6X6-10-316
					Sch 40	LAT45-6X6-40	LAT45-6X6-40-316
8x4	8.63	4.50	17.50	22.00	Sch 10	LAT45-8X4-10	LAT45-8X4-10-316
					Sch 40	LAT45-8X4-40	LAT45-8X4-40-316
8x6	8.63	6.63	17.50	22.00	Sch 10	LAT45-8X6-10	LAT45-8X6-10-316
					Sch 40	LAT45-8X6-40	LAT45-8X6-40-316
8	8.63	8.63	17.50	22.00	Sch 10	LAT45-8X8-10	LAT45-8X8-10-316
					Sch 40	LAT45-8X8-40	LAT45-8X8-40-316
10	10.75	10.75	20.50	25.50	Sch 10	LAT45-10X10-10	LAT45-10X10-10-316
					Sch 40	LAT45-10X10-40	LAT45-10X10-40-316
12	12.75	12.75	24.50	30.00	Sch 10	LAT45-12X12-10	LAT45-12X12-10-316
					Sch 40	LAT45-12X12-40	LAT45-12X12-40-316

Hub Drains

SPEC SHEET








Size	A	B	C	D	E	Thickness	304 Part Number	316 Part Number
3X2	3.50	2.38	4.00	3.50	6.00	Sch 10	HD-3X2-10	HD-3X2-10-316
						Sch 40	HD-3X2-40	HD-3X2-40-316
4X2	4.50	2.38	4.00	4.00	6.00	Sch 10	HD-4X2-10	HD-4X2-10-316
						Sch 40	HD-4X2-40	HD-4X2-40-316
4X3	4.50	3.50	4.00	4.00	6.00	Sch 10	HD-4X3-10	HD-4X3-10-316
						Sch 40	HD-4X3-40	HD-4X3-40-316
6X3	6.63	3.50	4.00	5.50	6.00	Sch 10	HD-6X3-10	HD-6X3-10-316
						Sch 40	HD-6X3-40	HD-6X3-40-316
6X4	6.63	4.50	4.00	5.50	6.00	Sch 10	HD-6X4-10	HD-6X4-10-316
						Sch 40	HD-6X4-40	HD-6X4-40-316
8X4	8.63	4.50	4.00	6.00	6.00	Sch 10	HD-8X4-10	HD-8X4-10-316
						Sch 40	HD-8X4-40	HD-8X4-40-316
8X5	8.63	5.56	4.00	6.00	6.00	Sch 10	HD-8X5-10	HD-8X5-10-316
						Sch 40	HD-8X5-40	HD-8X5-40-316
8X6	8.63	6.63	4.00	6.00	6.00	Sch 10	HD-8X6-10	HD-8X6-10-316
						Sch 40	HD-8X6-40	HD-8X6-40-316
10X4	10.75	4.50	4.00	7.00	6.00	Sch 10	HD-10X4-10	HD-10X4-10-316
						Sch 40	HD-10X4-40	HD-10X4-40-316
10X6	10.75	6.63	4.00	7.00	6.00	Sch 10	HD-10X6-10	HD-10X6-10-316
						Sch 40	HD-10X6-40	HD-10X6-40-316
10X8	10.75	8.63	4.00	7.00	6.00	Sch 10	HD-10X8-10	HD-10X8-10-316
						Sch 40	HD-10X8-40	HD-10X8-40-316
12X8	12.75	8.63	4.00	8.00	6.00	Sch 10	HD-12X8-10	HD-12X8-10-316
						Sch 40	HD-12X8-40	HD-12X8-40-316
12X10	12.75	10.75	4.00	8.00	6.00	Sch 10	HD-12X10-10	HD-12X10-10-316
						Sch 40	HD-12X10-40	HD-12X10-40-316

Grate Load Class Definitions







ASME A112.6.3

Grates shall be designed to meet the following loading classifications in a static condition.

GRATE LOAD CLASS	SAFE LIVE LOAD (paragraph 6.1.6 of the ANSI Standard.)	RECOMMENDED USES
 Light Duty	Under 2,000 lbs (900 kg).	For pedestrian foot traffic only.
 Medium Duty	2,000 lbs (900 kg) to 4,999 lbs (2,250 kg).	For light pneumatic tire traffic only. Sidewalks and residential parking.
 Heavy Duty	5,000 lbs (2,250 kg) to 7,499 lbs (3,375 kg).	For Commercial Pneumatic tire traffic patterns and tractor trailers.
 Extra Heavy Duty	7,500 lbs (3,375 kg) to 10,000 lbs (4,500 kg).	For forklift traffic. Roads and Highways. H-20 Load Rated.
 Special Duty	Over 10,000 lbs (4,500 kg).	For airport traffic.

DIN 19580

Grates shall be designed to meet the following loading classifications in a static condition.

LOAD CLASS	DESIGN LOAD	RECOMMENDED USES
 Load Class A	Light Duty Grate design load up to or exceeding 3,372 lbs per ft. 15 kn	For pedestrian foot traffic only.
 Load Class B	Medium Duty Grate design load of at least 28,100 lbs per ft. 125 kn	For light pneumatic tire traffic only. Sidewalks and residential parking.
 Load Class C	Heavy Duty Grate design load of at least 56,200 lbs per ft. 250 kn	Commercial Applications.
 Load Class D	Grate design load of at least 89,920 lbs per ft. H-20 Load Rated. 400 kn	For pneumatic forklift traffic. Extra Heavy Duty. Roads and Highways.
 Load Class E	Grate design load of at least 134,800 lbs per ft. 600 kn	For commercial heavy wheeled traffic, hardwheeled forklifts, and construction equipment. Extreme Heavy Duty.
 Load Class F	Grate design load of at least 202,320 lbs per ft. 900 kn	For airport traffic.

Transportation Classifications

- According to the American Association of State Highway and Transportation Officials (AASHTO) "Standard Specification for Highway Bridges," H-20 loading refers to a two-axle truck with a maximum dual-wheel load of 16,000 lbs, while HS-20 loading describes a tractor truck with a tandem axle semi-trailer, also with a dual-wheel load of 16,000 lbs.
- The FAA (Federal Aviation Administration) Advisory Circular AC 150/5320-6D specifies aircraft loading as 100,000 lbs distributed over a 9" x 9" area.
- The Americans with Disabilities Act (ADA) requires that slot widths on gratings in walkways be no more than 1/2 inch, with elongated slots positioned longitudinally, perpendicular to the primary direction of travel.
- Heel Proof refers to slots or perforations that are less than 1/4 inch in width or diameter.
- The maximum safe live load is determined by dividing the failure load by two.

Made in the USA



Phone

320.485.2471

Address

PO Box 909, 3902 230th Street
Winsted, Minnesota 55395

Email

customerservice@awimfg.com

awimfg.com

